



Financial Statements

Date: March 2022

PARKWAY SCHOOL DISTRICT
MONTHLY FINANCIAL REPORT
TABLE OF CONTENT

<u>DOCUMENT</u>	<u>PAGE</u>
EXECUTIVE SUMMARY.	1 - 2
GRAPHS - REVENUE, EXPENDITURE, CASH, AND FUND BALANCE .	3 - 5
RECAPITULATION OF FUNDS	6
ACCRUAL BALANCE SHEET.	7
BREAKOUT OF CASH AND INVESTMENTS	8
GRANTS FROM CARES ACT : COVID-19	9
MODIFIED ACCRUAL REVENUE SCHEDULE	10
EXPENDITURE SUMMARY BY OBJECT	11
FOOD SERVICE	12
EXPENDITURE SUMMARY BY BUILDING	13
EXPENDITURE SUMMARY BY PROGRAM	14 - 21
GLOSSARY	22 - 23
PURCHASING REPORTS	24 - 36



TO: Board of Education

DATE: April 20, 2022

FROM: Patricia Bedborough, CPA

RE: Executive Summary March 2022

Abstract

The March financial statements are attached. Our cash position remains strong. Our Property tax collection was higher in March than it was for the same month last year. Proposition C or sales tax revenues are greater than last year as well. You may also notice the increase in federal funding versus last year as well. This increase in Federal Funding is due to our stimulus funding and our food service revenues from the federal program and the beginning of the ESSER II and ESSER III reimbursements. Our largest challenge we are facing currently is the lack of staffing in many of our support staff positions. The salary expenditures are higher than last year as planned. This is a reflection of last year having a small summer school and a larger one this year in addition to last year we offered the voluntary furlough. In addition, we are paying for a great deal of overtime for our custodial and our maintenance staff based on our staffing shortages. In March, we also paid a large portion of the wellness incentive to our employees. You will notice that our energy costs have increased over last year. This is a reflection of our buildings being occupied this full year in addition to running the HVAC two hours prior to start time and two hours after dismissal. When you look specifically at the food service fund balance, you will see that while we still have a negative fund balance, this year we have reduced the negative balance. We have very high participation for both breakfast and lunch in comparison to the 19-20 school year.

Future Issues

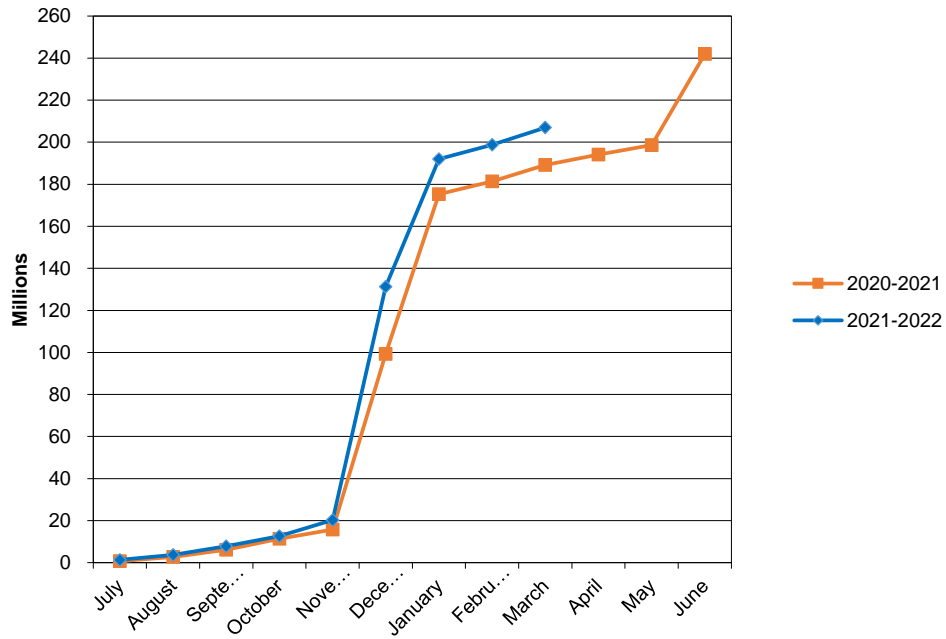
The following issues are still pending and could affect district finances in the future:

1. Health Insurance Costs – Health costs are a large portion of our benefit expenses. Our pharmacy benefit manager is through Business Health Coalition and we have substantial savings over market trends for our pharmacy. We have opened our near site clinics for our employees and staff effective August 2018. We had no increase in our premiums for 2019 and 2020 followed by a 1% reduction in costs for 2021. We have approved a 2.5% increase in premiums for 2022. Our wellness programs are very strong.
2. Commercial Property Assessments Appeals – As you are aware this has been a struggle over the last several years. We have seen our collection rate fluctuate due to these settlements. We worked with the state auditor's office last year and have approved \$3.2 million in recoupment. Included in this year we have levied .0583 to the capital projects fund from our prior year's recoupment calculations. Our collection rate continues to be around 96%.

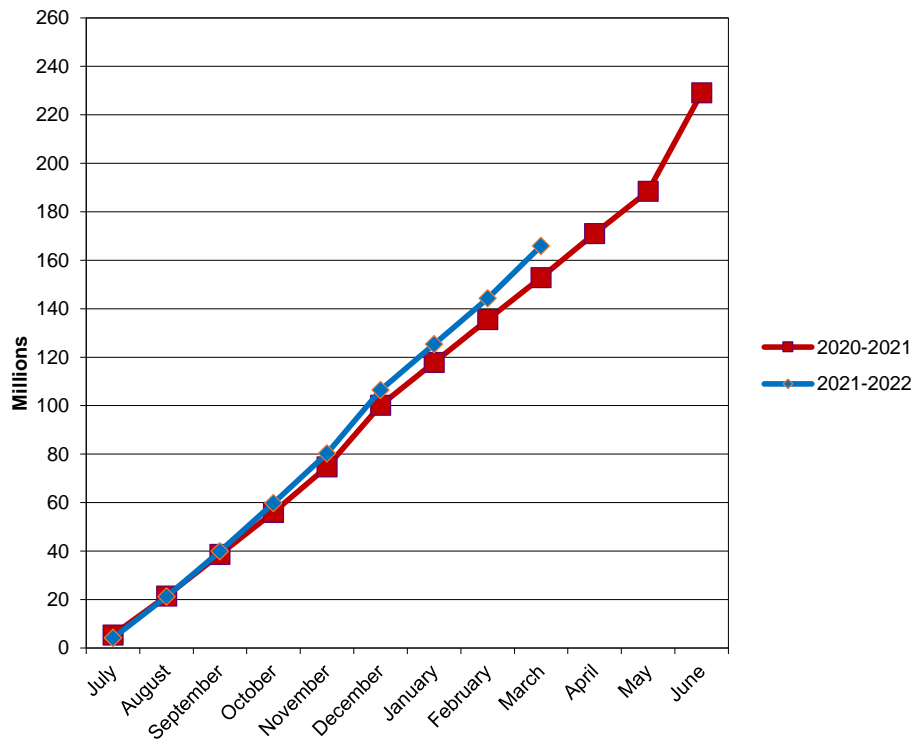
- 3. New Construction Assessments - In September we received our final amounts from St. Louis County. We had another strong year with new construction with just over \$20 million in commercial and residential property and \$54 million in new personal property.
- 4. Interest Income –Our interest from our banking account is nearly nothing due to the Fed’s lowering the treasury rate.
- 5. State Revenue –DESE will be basing our formula calculation on our attendance from two years ago. With the pandemic, our lowest attendance year was last year.
- 6. Spot Market Purchases – For information purposes, fiscal year-to-date purchases under the spot market procurement policy are as follows:

Fuel (Facilities)	\$	164,027.67
Fuel (Trans)	\$	101,759.25
Paper	\$	119,630.80
Trash Liner	\$	93,816.00
Produce:	\$	N/A

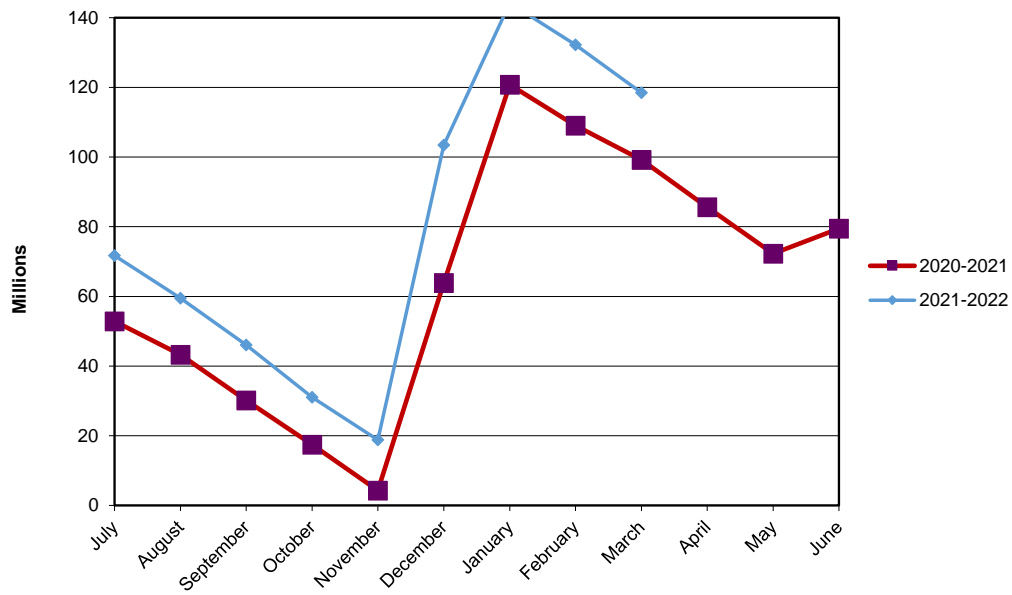
PARKWAY SCHOOL DISTRICT ACTUAL OPERATING REVENUE

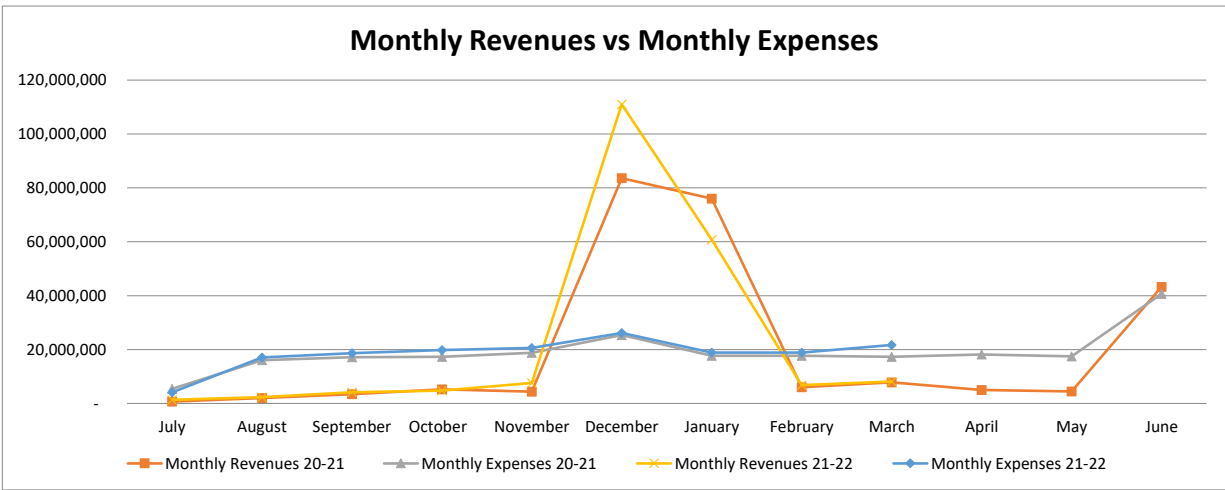
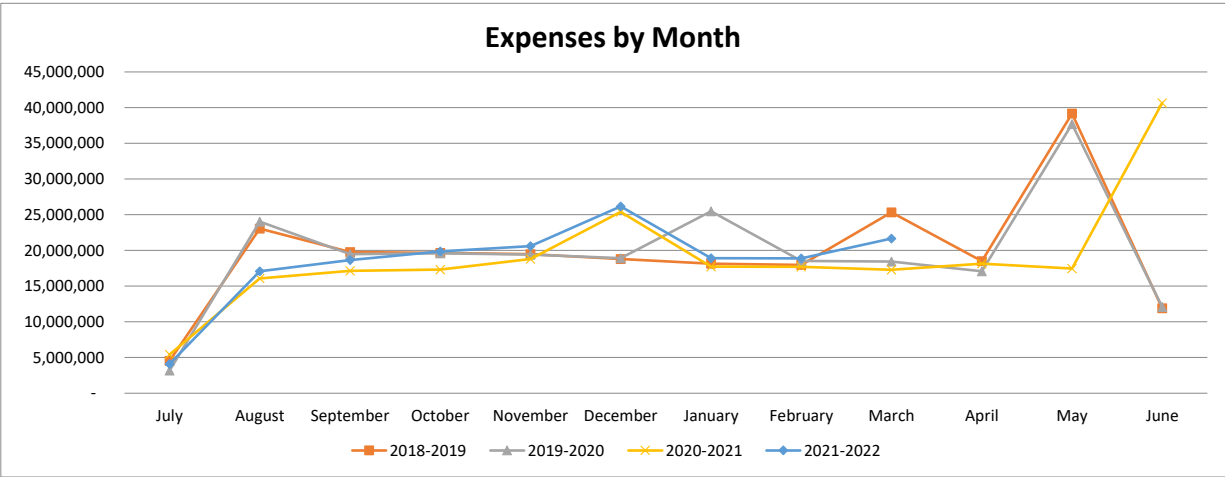
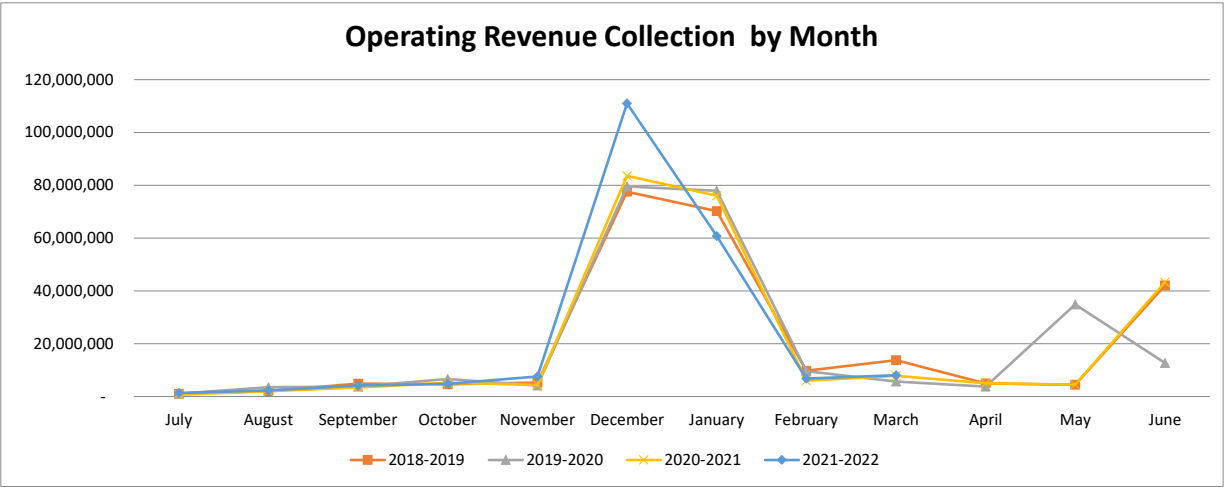


PARKWAY SCHOOL DISTRICT ACTUAL OPERATING EXPENDITURES



PARKWAY SCHOOL DISTRICT OPERATING FUND CASH AND INVESTMENTS





**Parkway School District
Recapitulation of Funds
Budget 2021-2022 With Restatement of Opening Balances**

FY2022 Full Year Budget

	Operating	Debt Service	Capital Projects	2014 Bond Issue	2018 Bond Issue	All Funds
Beginning Fund Balance	65,601,989	13,979,499	15,033,182	-	57,786,000	152,400,670
Revenues	260,977,497	27,104,873	4,200,620	-	100,000	292,382,990
Expenses	251,591,911	24,362,056	4,967,134	-	35,000,000	315,921,101
Transfers	(2,250,000)	-	2,250,000	-	-	-
Ending Fund Balance	72,737,575	16,722,316	16,516,668	-	22,886,000	128,862,559

ACTUAL FY22 THROUGH 3/31/22

	Operating	Debt Service	Capital Projects	2014 Bond Issue	2018 Bond Issue	All Funds
Beginning Fund Balance	65,601,989	13,979,499	15,033,182	-	57,786,000	152,400,670
Revenues	206,927,693	23,035,595	2,878,522	-	91,425	232,933,235
Expenses	165,939,580	24,347,585	2,665,071	-	10,719,687	203,671,923
Transfers	-	-	-	-	-	-
Ending Fund Balance	106,590,102	12,667,509	15,246,633	-	47,157,738	181,661,982

ACTUAL FY21 THROUGH 3/31/21

	Operating	Debt Service	Capital Projects	2014 Bond Issue	2018 Bond Issue	All Funds
Beginning Fund Balance	55,794,538	11,259,389	15,565,447	341,572	21,542,797	104,503,743
Revenues	189,155,757	21,421,794	394,986	1,006	60,591,972	271,565,515
Expenses	152,836,009	22,775,716	3,284,757	338,831	19,942,955	199,178,268
Transfers	-	-	-	-	-	-
Ending Fund Balance	92,114,286	9,905,467	12,675,676	3,747	62,191,814	176,890,990

**PARKWAY SCHOOL DISTRICT
ACCRUAL BALANCE SHEET
March 31, 2022**

	TOTAL- ALL FUNDS 3/31/2022	TOTAL- ALL FUNDS 3/31/2021
ASSETS		
Cash & Investments	\$ 202,504,870	195,282,168
Accounts Receivable	3,135	99
Inventories	1,010,114	1,129,384
Prepaid Expenses	2,451,732	1,629,945
Land	3,457,837	3,457,837
Land Improvements	16,122,147	17,321,487
Buildings/Improvements	195,589,218	198,567,464
Construction in Progress	50,124,673	39,597,056
Equipment	11,110,190	11,248,236
	<hr/>	<hr/>
Total Assets	\$ 482,373,916	468,233,676
	<hr/>	<hr/>
LIABILITIES & FUND BALANCE		
Accounts Payable - Operating Funds	\$ 3,433,207	1,870,137
Accounts Payable - Bond Issue Funds	21,740	42,927
Accounts Payable - Medical Fund	-	121,620
Wages, Payroll Taxes, and Benefits Payable	4,465,163	3,452,967
Bonds Payable	243,765,000	203,435,000
Interest Payable	2,702,497	2,475,953
Liability for Compensated Absences	1,766,400	1,731,286
Liability for Early Retirement	26,418	63,015
	<hr/>	<hr/>
Total Liabilities	\$ 256,180,424	213,192,905
	<hr/>	<hr/>
Bond Issue Fund Balance	47,157,738	62,195,561
Debt Service Fund Balance	12,667,509	9,905,467
Capital Projects Fund Balance	15,246,633	12,675,676
Equity in Fixed Assets less Long Term Liabilities	28,143,750	62,486,826
Medical Fund Balance	16,387,759	15,662,955
Operating Fund Balance	106,590,102	92,114,286
	<hr/>	<hr/>
Total Fund Balance	\$ 226,193,491	255,040,771
	<hr/>	<hr/>
TOTAL LIABILITIES & FUND BALANCE	\$ 482,373,916	468,233,676
	<hr/>	<hr/>

BREAKOUT OF CASH & INVESTMENT BALANCE

	<u>3/31/2022</u>	<u>3/31/2021</u>
MEDICAL FUND CASH	16,387,757	15,784,574
DEBT SERVICE FUND CASH	5,259,112	9,940,557
DEBT SERVICE FUND INVESTMENTS	7,443,488	-
BOND ISSUE FUND CASH	47,135,998	62,120,679
CAPITAL PROJECTS FUND CASH	7,804,003	8,267,211
OPERATING FUND CASH	32,896,329	99,160,929
OPERATING FUND INVESTMENTS	85,578,183	8,218
	<hr/>	<hr/>
TOTAL	202,504,870	195,282,168

RESTRICTED RESERVE

	<u>3/31/2022</u>	<u>3/31/2021</u>
FOOD SERVICE	(1,040,469)	(2,281,275)
MEDICAL BENEFITS	16,387,759	15,662,955
STUDENT ACTIVITY	3,527,187	3,164,581
	<hr/>	<hr/>
TOTAL	18,874,477	16,546,261

Grants from Covid-19 Stimulus Funds

Grant	Award	Received	Spent through 3/31/22	Status	Description
Cares Act - ESSER	875,664	875,644	875,664	approved - fully received and fully spent Districts portion. Some non publics are finishing their portion still.	Utilized for salaries and benefits during closure. \$190,000 of grant is for non public schools.
Coronavirus Relief Fund(CRF)	1,199,707	1,199,707	1,199,707	approved - fully received and fully spent	Grant expenses include PPE, care coordinators and digital learning expenses. \$77,389 of this grant will be paid to VICC.
Covid-19 Response Supply Grant	502,883	502,883	502,883	approved - fully spent and received	This grant is a 75/25% split between the County and state. PPE, partitions and sanitation supplies were applied against this grant.
FEMA	174,932	-	233,243	approved - spent but not received	Reimbursed 75% of PPE supplies and some custodial over time from 3/17/20 to 9/15/20. Grant reimbursed at 75% of expenses, a total of \$233,243 in expenses were submitted with a projected reimbursement of \$174,932
Student Connectivity Grant - B	112,000	112,000	112,000	approved - fully spent and received	Grant is a 50% reimbursement for hot spots
Transportation Supplement	153,918	97,843	97,843	Submitted a request for reimbursement in early August 2021	Grant is primarily for transportation PPE and sanitation supplies and summer school expenses for buses. Have until 9/30/22 to spend the funds.
Cares Act - unemployment	TBD	178,482	356,964	This is auto applied to our unemplo	Reimburses District for 50% of unemployment expenses
County Early Cares Child Care Reponse Program	100,950	100,950	100,950	approved and fully spent	Costs incurred to child care facilities in St. Louis County for business interruption expenses and compliance with health and safety measures
ESSER II	5,361,260	1,728,739	1,963,265	DESE recently opened the reimbursement requests for this grant. We are in the process of requesting reimbursement	Uses include PPE, air quality improvements, digital learning expenses, sub costs related to COVIDS absences, contact tracers, counselors and care coordinators over the next two fiscal years.
ESSER III*	11,897,669	1,502,645	1,696,567	DESE recently opened the reimbursement requests for this grant. We are in the process of requesting reimbursement	Similar to ESSER II with the addition of summer school expenses, reading specialist, and instructional coaches. Have until 9/30/24 to spend the funds. 20% of the grant must address learning loss.
Totals	20,378,983	6,298,893	7,139,086		

PARKWAY SCHOOL DISTRICT
MODIFIED ACCRUAL REVENUE SCHEDULE
TOTAL ALL FUNDS

	YEAR TO DATE 3/31/2022				YEAR TO DATE 3/31/21				CHANGE FROM PRIOR YEAR	
	BUDGETED	REVENUE	%	BALANCE TO	REVENUE**	REVENUE	%	BALANCE TO		
	REVENUE	REALIZED	REALIZED	BE REALIZED	6/30/21	REALIZED	REALIZED	BE REALIZED	\$	%
LOCAL										
Property Taxes	185,688,328	161,962,565	87.22%	23,725,763	185,056,912	153,969,074	83.20%	31,087,838	7,993,491	5.19%
Delinquent Property Taxes	-	-	0.00%	-	819,182	-	0.00%	819,182	-	0.00%
Sales Tax	18,860,400	11,357,927	60.22%	7,502,473	17,267,749	9,660,268	55.94%	7,607,481	1,697,659	17.57%
M&M Surtax	5,418,041	3,881,180	71.63%	1,536,861	5,409,315	3,578,364	66.15%	1,830,951	302,816	8.46%
Food Service	250,000	291,511	116.60%	(41,511)	211,426	110,363	52.20%	101,063	181,148	164.14%
Other Local	4,425,980	2,592,998	58.59%	1,832,982	1,041,248	1,586,422	152.36%	(545,174)	1,006,576	63.45%
VICC-VST Revenue	6,702,859	1,993,722	29.74%	4,709,137	7,187,345	2,179,418	30.32%	5,007,927	(185,696)	-8.52%
TOTAL LOCAL	221,345,608	182,079,903	82.26%	39,265,705	216,993,177	171,083,909	78.84%	45,909,268	10,995,994	6.43%
INTEREST	100,000	264,836	264.84%	(164,836)	342,657	197,675	57.69%	144,982	67,161	19.60%
COUNTY	3,635,827	1,054,838	29.01%	2,580,989	3,762,365	3,724,165	98.98%	38,200	(2,669,327)	-70.95%
STATE										
Basic Formula	2,507,206	2,087,650	83.27%	419,556	2,327,096	1,792,428	77.02%	534,668	295,222	12.69%
Classroom Trust	6,203,112	5,001,980	80.64%	1,201,132	6,429,322	4,560,997	70.94%	1,868,325	440,983	6.86%
Transportation	1,409,100	1,179,471	83.70%	229,629	1,402,473	1,046,825	74.64%	355,648	132,646	9.46%
Other State	1,309,618	724,906	55.35%	584,712	1,380,060	695,658	50.41%	684,402	29,248	2.12%
TOTAL STATE	11,429,036	8,994,007	78.69%	2,435,029	11,538,951	8,095,908	70.16%	3,443,043	898,099	7.78%
FEDERAL										
Federal Food Service	7,433,411	5,163,131	69.46%	2,270,280	2,432,108	1,106,743	45.51%	1,325,365	4,056,388	166.78%
Other Federal Entitlements	10,466,481	5,858,933	55.98%	4,607,548	4,505,589	3,648,670	80.98%	856,919	2,210,263	49.06%
TOTAL FEDERAL	17,899,892	11,022,064	61.58%	6,877,828	6,937,697	4,755,413	68.54%	2,182,284	6,266,651	90.33%
OTHER FINANCING SOURCES										
Transportation Reimbursement	3,032,845	1,594,200	52.56%	1,438,645	1,020,968	470,576	46.09%	550,392	1,123,624	110.05%
Tuition From Other Districts	28,930	3,910	13.52%	25,020	28,930	19,047	65.84%	9,883	(15,137)	-52.32%
Sale Of Property	5,359	30,323	565.83%	(24,964)	14,854	9,217	62.05%	5,637	21,106	142.09%
TOTAL OTHER FINANCING SOURCES	3,067,134	1,628,433	53.09%	1,438,701	1,064,752	498,840	46.85%	565,912	1,129,593	106.09%
SUB-TOTAL OPERATING REVENUE	257,477,497	205,044,081	79.64%	52,433,416	240,639,599	188,355,910	78.27%	52,283,689	16,688,171	6.93%
STUDENT ACTIVITIES	3,500,000	1,883,612	53.82%	1,616,388	1,286,383	799,847	62.18%	486,536	1,083,765	84.25%
TOTAL OPERATING REVENUE	260,977,497	206,927,693	79.29%	54,049,804	241,925,982	189,155,757	78.19%	52,770,225	17,771,936	7.35%
NON-OPERATING REVENUES										
2019 Bond Issue	-	-	100.00%	-	55,000,000	55,000,000	0.00%	-	(55,000,000)	100.00%
2019 Bond Issue Interest/Premium	100,000	91,425	91.43%	8,575	5,668,922	5,591,972	98.64%	76,950	(5,500,547)	-97.03%
2014 Bond Issue Interest/Premium	-	-	100.00%	-	564	1,006	178.37%	(442)	(1,006)	-178.37%
Debt Service Property Taxes	26,335,720	22,875,754	86.86%	3,459,966	24,827,748	20,657,055	83.20%	4,170,693	2,218,699	8.94%
Debt Service Delinquent Prop. Taxes	-	-	0.00%	-	(109,900)	-	0.00%	(109,900)	-	0.00%
Debt Service Interest/Premium	45,000	28,750	63.89%	16,250	48,936	35,114	71.75%	13,822	(6,364)	-13.00%
Debt Service County Revenue	724,153	131,091	18.10%	593,062	729,625	729,625	100.00%	-	(598,534)	-82.03%
Cap. Projects Property Taxes	3,133,413	2,524,022	0.00%	609,391	-	-	0.00%	-	2,524,022	0.00%
Capital Projects Other	1,066,807	354,483	33.23%	712,324	370,063	394,986	106.73%	(24,923)	(40,503)	-10.94%
Capital Interest/Premium	400	17	4.25%	383	442	-	0.00%	442	17	3.85%
TOTAL ALL REVENUE SOURCES	292,382,990	232,933,235	79.67%	59,449,755	328,462,382	271,565,515	82.68%	56,896,867	(38,632,280)	-11.76%

EXPENDITURE SUMMARY BY OBJECT
TOTAL ALL FUNDS
MARCH 31, 2022

	BUDGET 2021-2022	ACTUAL EXPENDITURES YTD 3/31/2022	% EXPENDED 2021-2022	ACTUAL** EXPENDITURES 06/30/2021	ACTUAL EXPENDITURES YTD 3/31/2021	% EXPENDED 2020-2021	CHANGE FROM PRIOR YEAR	
							\$	%
SALARIES								
Certificated	109,066,529	70,320,626	64.47%	102,213,460	66,668,412	65.22%	3,652,214	5.48%
Classified	37,380,954	26,164,241	69.99%	33,875,464	23,907,543	70.57%	2,256,698	9.44%
Administrative	13,354,583	10,080,819	75.49%	12,653,477	9,694,565	76.62%	386,254	3.98%
TOTAL SALARIES	159,802,066	106,565,686	66.69%	148,742,401	100,270,520	67.41%	6,295,166	6.28%
BENEFITS								
Retirement, Social Security and Medicare	27,396,014	17,996,350	65.69%	25,462,022	17,039,614	66.92%	956,736	5.61%
Medical, Dental and Life Insurance	27,836,473	18,182,574	65.32%	26,508,994	18,408,706	69.44%	(226,132)	-1.23%
TOTAL BENEFITS	55,232,487	36,178,924	65.50%	51,971,016	35,448,320	68.21%	730,604	2.06%
PURCHASED SERVICES								
Substitute Services	2,667,076	2,085,339	78.19%	1,737,896	997,866	57.42%	1,087,473	108.98%
Tuition	439,850	117,218	26.65%	296,560	227,822	76.82%	(110,604)	-48.55%
Professional Services	3,309,925	1,687,995	51.00%	1,697,212	1,071,694	63.14%	616,301	57.51%
Audit	36,000	31,000	86.11%	33,500	31,000	92.54%	-	0.00%
Technical Services	153,251	86,802	56.64%	75,923	71,193	93.77%	15,609	21.92%
Legal Services	200,000	103,126	51.56%	158,151	117,990	74.61%	(14,864)	-12.60%
Property Services	2,859,062	1,969,525	68.89%	2,364,552	1,596,736	67.53%	372,789	23.35%
Travel & Contracted Trans.	2,045,330	1,204,161	58.87%	706,656	160,997	22.78%	1,043,164	647.94%
Property Insurance	919,512	607,259	66.04%	889,701	889,066	99.93%	(281,807)	-31.70%
Liability Insurance	956,219	675,441	70.64%	926,668	927,303	100.07%	(251,862)	100.00%
Other Purchased Services	3,322,541	2,037,217	61.32%	3,582,496	1,279,331	35.71%	757,886	59.24%
TOTAL PURCHASED SERVICES	16,908,766	10,605,083	62.72%	12,469,315	7,370,998	59.11%	3,234,085	43.88%
CONSUMABLES								
General Supplies	6,019,663	3,080,412	51.17%	6,219,249	3,098,316	49.82%	(17,904)	-0.58%
Instructional Supplies	7,407,158	3,213,734	43.39%	4,564,275	3,120,093	68.36%	93,641	3.00%
Textbooks and Library Books	1,663,560	485,806	29.20%	1,098,871	825,015	75.08%	(339,209)	-41.12%
Gasoline/Diesel	779,500	454,385	58.29%	310,281	175,986	56.72%	278,399	158.19%
Energy Services	3,540,000	2,554,161	72.15%	3,046,293	1,566,465	51.42%	987,696	63.05%
Food Service Supplies	2,738,711	1,650,955	60.28%	941,738	528,862	56.16%	1,122,093	212.17%
TOTAL CONSUMABLES	22,148,592	11,439,453	51.65%	16,180,707	9,314,737	57.57%	2,124,716	22.81%
SUBTOTAL OPERATING EXPENSES	254,091,911	164,789,146	64.85%	229,363,438	152,404,575	66.45%	12,384,571	8.13%
STUDENT ACTIVITIES	3,500,000	1,150,434	32.87%	1,135,640	431,434	37.99%	719,000	-5.12%
ANTICIPATED EXPENDITURE SAVINGS	(6,000,000)	-	0.00%	-	-	0.00%	-	0.00%
TOTAL OPERATING EXPENSES	251,591,911	165,939,580	65.96%	230,499,078	152,836,009	66.31%	13,103,571	8.57%
CAPITAL OUTLAY - NON BOND EXPENSES								
Land Improvement	500,000	515,669	103.13%	33,447	-	0.00%	515,669	100.00%
Building Alterations	1,092,255	358,613	32.83%	796,727	682,079	85.61%	(323,466)	-47.42%
General Equipment	1,399,810	325,281	23.24%	738,643	527,049	71.35%	(201,768)	-38.28%
Instructional Equipment	194,014	73,773	38.02%	78,557	38,880	49.49%	34,893	89.75%
Technology Equipment	126,766	69,646	54.94%	70,755	41,712	58.95%	27,934	66.97%
Student Activity	60,000	36,418	60.70%	59,549	34,259	57.53%	-	0.00%
Vehicles	310,298	120,926	38.97%	379,464	338,428	89.19%	(217,502)	-64.27%
School Buses	955,010	190,306	19.93%	1,407,301	1,407,301	100.00%	(1,216,995)	-86.48%
TOTAL CAPITAL OUTLAY	4,638,153	1,690,632	36.45%	3,564,443	3,069,708	86.12%	(1,379,076)	-44.93%
2014 BOND ISSUE EXPENDITURES	-	-	0.00%	342,136	338,831	99.03%	(338,831)	-100.00%
2018 BOND ISSUE EXPENDITURES	35,000,000	10,719,687	30.63%	24,425,719	19,942,955	81.65%	(9,223,268)	-46.25%
CAPITAL FUND - BUS LEASES	328,981	974,439	296.20%	334,977	215,049	64.20%	759,390	353.12%
DEBT SERVICE - GO BONDS	24,362,056	24,347,585	99.94%	22,776,299	22,775,716	100.00%	1,571,869	6.90%
GRAND TOTAL EXPENSES	315,921,101	203,671,923	64.47%	281,942,652	199,178,268	70.64%	4,493,655	2.26%

**FOOD SERVICE
STATEMENT OF INCOME AND EXPENSE
March 31, 2022**

	BUDGET FY22	CURRENT MONTH	ACTUAL EXPENDITURES YTD 3/31/2022	% EXPENDED	PRIOR YEAR ACTUAL FY21	PRIOR YEAR TO DATE 3/31/2021	PRIOR YEAR % EXPENDED
RESERVE FOOD SERVICE SURPLUS		(\$1,144,797)	(\$2,384,393)		(\$804,185)	(\$804,186)	
INCOME							
LOCAL	250,000	44,356	291,511	116.60%	211,425	110,363	52.20%
STATE	42,138	3,183	23,203	55.06%	39,261	7,275	18.53%
FEDERAL	5,933,411	851,610	6,154,351	103.72%	2,522,300	1,511,793	59.94%
TOTAL INCOME	6,225,549	899,149	6,469,065	103.91%	2,772,986	1,629,431	58.76%
COST OF GOODS SOLD:							
Beginning Inventory		206,872	277,629		281,567	281,567	100.00%
Add: Purchases-Food	2,738,711	238,446	1,650,955	60.28%	941,738	528,862	56.16%
Purchases-Other	283,900	3,639	31,885	11.23%	116,073	93,032	80.15%
Goods Available		448,957	1,960,469		1,339,378	903,461	67.45%
Less: Ending Inventory		193,281	193,281		277,629	290,224	104.54%
TOTAL COST OF GOODS	3,022,611	255,676	1,767,188	58.47%	1,061,749	613,237	57.76%
GROSS MARGIN	\$3,202,938	643,473	4,701,877	146.80%	1,711,237	1,016,193	59.38%
OPERATION COSTS:							
Salaries	2,431,692	259,202	1,586,477	65.24%	2,002,895	1,419,512	70.87%
Fringe Benefits	1,244,973	112,771	751,758	60.38%	1,095,848	769,181	70.19%
Purchased Services	209,920	157,801	905,711	431.46%	73,763	55,722	75.54%
Operating Supplies	31,000	12,992	54,033	174.30%	47,391	44,523	93.95%
Credit for Services	(50,000)	(3,621)	(29,019)	58.04%	(47,114)	(22,992)	48.80%
Total Operating Costs	3,867,585	539,145	3,268,960	84.52%	3,172,783	2,265,945	71.42%
INCOME (LOSS) FROM OPERATIONS	(664,647)	104,328	1,432,917		(1,461,546)	(1,249,752)	85.51%
EQUIPMENT	200,000	-	88,993	44.50%	118,662	114,502	96.49%
RESERVE FOOD SERVICE SURPLUS		(\$1,040,469)	(\$1,040,469)		(\$2,384,393)	(\$2,168,439)	90.94%

**Parkway School District
Building Location Recap Report**

Fiscal Year 2022 Through Period 9 Run Date: 04-19-2022 @ 14:12:36

	Budget	Expended	Encumbrances	Unexpended
FERN RIDGE HIGH	23,780.00	6,432.01	622.36	16,725.63
CENTRAL HIGH	331,911.00	155,322.81	30,084.24	146,503.95
NORTH HIGH	320,152.00	147,851.10	56,542.85	115,758.05
WEST HIGH	419,967.00	172,842.24	18,328.54	228,796.22
SOUTH HIGH	487,282.00	212,602.14	44,461.49	230,218.37
SOUTHWEST MIDDLE	117,842.00	55,745.79	4,008.83	58,087.38
CENTRAL MIDDLE	173,276.00	67,516.12	3,806.28	101,953.60
NORTHEAST MIDDLE	172,075.00	106,735.03	44,942.63	20,397.34
SOUTH MIDDLE	104,997.00	62,186.44	7,931.49	34,879.07
WEST MIDDLE	234,186.00	76,557.58	86,568.24	71,060.18
MCKELVEY PRIMARY	40,320.00	30,236.14	11,191.07	-1,107.21
BARRETS ELEM.	72,945.00	42,369.60	3,992.40	26,583.00
BELLERIVE ELEM.	75,310.00	30,640.02	1,950.12	42,719.86
CARMAN TRAILS ELEM.	81,790.00	25,433.78	1,265.18	55,091.04
CLAYMONT ELEM.	100,778.00	40,950.92	783.08	59,044.00
CRAIG ELEM.	51,738.00	34,447.30	6,811.72	10,478.98
GREEN TRAILS ELEM.	81,743.00	38,170.84	5,927.49	37,644.67
HANNA WOODS ELEM.	110,255.00	54,242.72	7,751.40	48,260.88
HENRY ELEM.	116,263.00	52,696.83	1,818.64	61,747.53
HIGHCROFT ELEM.	52,824.00	23,527.66	386.80	28,909.54
MASON RIDGE ELEM.	94,288.00	25,231.10	6,153.92	62,902.98
MCKELVEY INTERMEDIATE	100,480.00	30,737.91	55,508.64	14,233.45
OAK BROOK ELEM.	91,486.00	38,256.28	22,775.23	30,454.49
PIERREMONT ELEM.	94,531.00	32,909.90	4,084.59	57,536.51
RIVER BEND ELEM.	84,563.00	36,154.65	5,107.54	43,300.81
ROSS ELEM.	76,124.00	23,322.91	942.48	51,858.61
SORRENTO SPRINGS ELEM.	71,970.00	15,306.76	962.12	55,701.12
SHENANDOAH VALLEY ELEM.	91,015.00	49,509.26	2,532.00	38,973.74
WREN HOLLOW ELEM.	82,471.00	64,741.94	1,875.33	15,853.73
 Grand Total for Funds 10-12	 3,753,258.00	 1,587,047.92	 317,900.91	 1,848,309.17
Grand Total for Fund 20	0.00	17,449.34	0.00	-17,449.34
Grand Total for Fund 30	0.00	0.00	0.00	0.00
Grand Total for Funds 40-41	203,104.00	148,180.52	121,215.79	-66,292.31
Grand Total All	3,956,362.00	1,752,677.78	439,116.70	1,764,567.52

**Parkway School District
Consolidated Budget - Programs Recap Report**

Fiscal Year 2022 Through Period 9 Run Date: 04-19-2022 @ 14:13:37

	Budget	Expended	Encumbrances	Unexpended
SPECIAL READING	17,254.00	7,429.61	1,458.10	8,366.29
COMM ARTS	176,958.00	60,277.02	6,503.79	110,177.19
MATHEMATICS	66,795.00	41,984.59	3,222.60	21,587.81
FINE ARTS	120,651.00	70,673.64	11,823.46	38,153.90
PHYSICAL EDUCATION	56,014.00	30,209.26	2,060.48	23,744.26
SCIENCE	96,578.00	38,988.28	5,891.03	51,698.69
SOCIAL STUDIES	78,508.00	36,079.90	367.10	42,061.00
INSTRUCTIONAL TECHNOLOGY	98,460.00	43,473.86	4,864.15	50,121.99
GUIDANCE	30,196.00	11,254.19	1,945.00	16,996.81
ART	130,525.00	87,119.32	9,027.44	34,378.24
BLDG ADMIN SERVICES	2,507,504.00	1,053,515.62	339,709.78	1,114,278.60
AUDIO VISUAL SERVICES	2,175.00	897.96	0.00	1,277.04
BUSINESS EDUCATION	36,043.00	11,377.64	19.87	24,645.49
MODERN CLASSICAL LANG	41,287.00	19,121.40	0.00	22,165.60
FAMILY AND CONSUMER SC	81,846.00	31,343.56	865.03	49,637.41
INDUSTRIAL ARTS	42,315.00	24,380.14	2,641.20	15,293.66
STUDENT BODY ACT	244,452.00	118,800.94	34,132.62	91,518.44
COOP VOC ED	2,469.00	533.03	0.00	1,935.97
UNIFIED STUDIES	2,322.00	3,365.79	356.30	-1,400.09
SPEECH	21,995.00	10,984.95	0.00	11,010.05
LIBRARY SVCS	78,945.00	65,111.68	14,179.68	-346.36
HEALTH ED	7,690.00	2,033.16	0.00	5,656.84
EEE CAMP	1,725.00	0.88	0.00	1,724.12
ESOL	983.00	628.35	0.00	354.65
GIFTED EDUCATION	12,372.00	5,368.79	49.07	6,954.14
SPECIAL SERVICES	300.00	0.00	0.00	300.00
ADC	0.00	387.00	0.00	-387.00
INSTRUCTIONAL STAFFING	136,500,638.00	91,413,633.88	0.00	45,087,004.12
BLDG LEVEL STAFFING	16,715,919.00	12,560,754.37	0.00	4,155,164.63
ATHLETICS	6,479,385.00	1,171,573.69	203,257.38	5,104,553.93
ADULT BASIC EDUCATION	1,739,135.00	969,713.41	4,690.72	764,730.87
SWIM CLUB	794,810.00	414,076.81	25,513.00	355,220.19
EARLY CHILDHOOD	1,625,770.00	1,288,391.35	2,363.74	335,014.91
PRESCHOOLS	2,208,037.00	1,646,167.87	116.79	561,752.34
PARK ROCK COMM ED	19,400.00	21,071.05	0.00	-1,671.05
STUDENT SERVICES	1,198,878.00	1,052,881.03	329,761.53	-183,764.56
PUPIL PERSONNEL	2,087,802.00	1,467,064.03	0.00	620,737.97
HEALTH SERVICES	2,972,785.00	1,999,283.98	27,572.91	945,928.11

**Parkway School District
Consolidated Budget - Programs Recap Report**

Fiscal Year 2022 Through Period 9 Run Date: 04-19-2022 @ 14:13:37

	Budget	Expended	Encumbrances	Unexpended
GUIDANCE AND COUNSELING	245,842.00	246,866.70	43,500.35	-44,525.05
SEB SUPPORT	96,236.00	24,123.51	4,876.45	67,236.04
DATA MGMT/RESEARCH	307,346.00	198,708.56	1,851.89	106,785.55
STUDENT DISC & ALT STUDIES	806,401.00	595,600.48	77.77	210,722.75
SPECIAL SERVICES	349,491.00	250,917.67	0.00	98,573.33
ASST SUPER OF STUDENT SERV	379,279.00	179,145.40	13,580.32	186,553.28
TEACH LEARN ACCOUNTABILITY	5,378,808.00	2,735,836.11	241,442.41	2,401,529.48
PROFESSIONAL LEARNING	1,267,650.00	486,200.56	17,941.09	763,508.35
READING DIAGNOSTICS	120,727.00	77,200.68	0.00	43,526.32
INSTRUC TECH LIBRARY MEDIA	1,147,659.00	824,389.30	28,346.02	294,923.68
STUDENT ASSESSMENT	289,729.00	151,938.08	91,745.90	46,045.02
PROGRESS MONITORING	306,498.00	139,240.45	0.00	167,257.55
ELEM COMM ARTS	5,800.00	9,113.71	0.00	-3,313.71
ELEM SOC STUDIES	24,750.00	0.00	0.00	24,750.00
ELEM MATH	2,000.00	1,605.91	0.00	394.09
ELEM SCIENCE	13,587.00	8,823.76	0.00	4,763.24
MIDD ELA	4,075.00	652.79	0.00	3,422.21
MIDD SOC STUDIES	600.00	106.49	0.00	493.51
MIDD MATH	7,500.00	2,517.06	0.00	4,982.94
MIDD SCIENCE	13,125.00	962.30	0.00	12,162.70
HIGH ELA	40,755.00	471.08	0.00	40,283.92
HIGH SOC STUDIES	2,720.00	344.34	0.00	2,375.66
HIGH MATH	1,650.00	15.59	0.00	1,634.41
HIGH SCIENCE	2,380.00	80.00	0.00	2,300.00
FINE ARTS	195,369.00	91,323.04	36,665.26	67,380.70
PHYSICAL EDUC	2,000.00	99.00	0.00	1,901.00
GIFTED	27,700.00	1,469.27	0.00	26,230.73
ESOL	47,900.00	13,990.78	6,623.88	27,285.34
WORLD LANGUAGE	12,750.00	12,558.27	0.00	191.73
CAREER & TECH ED	7,550.00	2,348.89	0.00	5,201.11
CHOICE	447,750.00	232,607.08	264,116.66	-48,973.74
INSTRUCTIONAL TECHNOLOGY	10,050.00	7,054.22	0.00	2,995.78
PATH	151,366.00	85,317.37	220.37	65,828.26
OUTDOOR SCHOOL	48,150.00	-6,002.26	0.00	54,152.26
SUMMER SCHOOL	1,513,615.00	292,541.86	20,000.00	1,201,073.14
VIRTUAL CAMPUS	106,538.00	2,790,653.02	14,089.34	-2,698,204.36
ST. LOUIS VIRTUAL ACADEMY	0.00	550.00	0.00	-550.00
BOARD OF EDUCATION	194,900.00	82,445.59	0.00	112,454.41

**Parkway School District
Consolidated Budget - Programs Recap Report**

Fiscal Year 2022 Through Period 9 Run Date: 04-19-2022 @ 14:13:37

	Budget	Expended	Encumbrances	Unexpended
SUPERINTENDENT	901,716.00	377,319.48	0.00	524,396.52
DISTRICT DUES	157,131.00	156,278.04	0.00	852.96
LEGAL SERVICES	200,000.00	100,878.86	53,382.50	45,738.64
DEPUTY SUPERINTENDENT	464,102.00	249,899.49	2,646.00	211,556.51
CHIEF FINANCIAL OFFICER	361,947.00	261,624.59	1,741.51	98,580.90
COMMUNICATIONS	1,093,605.00	762,666.68	32,295.53	298,642.79
SAFETY SECURITY	1,283,188.00	864,840.39	235,930.79	182,416.82
SPECIAL PROJECTS	544,738.00	97,629.27	0.00	447,108.73
FINANCE	1,098,655.00	857,097.05	13,661.53	227,896.42
INTERNAL EQUIP FIN	483,879.00	329,174.90	174,651.79	-19,947.69
RISK MGMT	2,688,487.00	1,775,775.32	126,705.75	786,005.93
FOOD SERVICES	8,190,196.00	5,040,792.77	103,798.59	3,045,604.64
PURCHASING	474,844.00	252,163.74	163.11	222,517.15
PRINT SHOP	33,381.00	41,065.57	7,087.63	-14,772.20
SCHOOL STORES	201,859.00	138,828.06	23,332.86	39,698.08
WAREHOUSE	775,261.00	460,900.31	12,241.02	302,119.67
MAILROOM	82,119.00	62,814.64	881.05	18,423.31
TECHNOLOGY	8,329,794.00	4,769,835.20	1,025,828.67	2,534,130.13
HUMAN RESOURCES	1,199,403.00	841,649.95	5,297.73	352,455.32
TRANSPORTATION	7,084,178.00	5,195,745.44	220,831.53	1,667,601.03
SSD TRANSPORTATION	2,332,845.00	1,355,700.82	0.00	977,144.18
STUDENTS IN TRANSITION	25,000.00	939.84	965.07	23,095.09
FACILITY OPERATIONS	8,702,506.00	5,644,063.01	127,620.25	2,930,822.74
FACILITY MAINTENANCE	4,667,128.00	3,483,158.39	385,660.66	798,308.95
GROUND MAINTENANCE	2,240,887.00	1,291,034.83	271,339.19	678,512.98
PLANNING	2,035,120.00	1,524,831.76	325,994.20	184,294.04
ENVIRONMENTAL SVCS	611,061.00	384,781.53	93,649.46	132,630.01
FACILITY MANAGEMENT	936,323.00	568,764.23	42,817.34	324,741.43
REBATE PROJECTS	1,039,221.00	292,319.72	35,638.85	711,262.43
ENERGY SERVICES	4,066,000.00	2,936,456.64	734,018.02	395,525.34
SUSTAINABILITY	1,050,828.00	566,007.78	186,428.29	298,391.93
2018 BOND	35,000,000.00	10,719,686.27	22,441,116.12	1,839,197.61
DEBT SERVICE	24,362,056.00	24,347,585.16	4,621.08	9,849.76
STATE GRANTS	307,749.00	221,324.85	0.00	86,424.15
FEDERAL GRANTS	1,814,326.00	1,145,884.14	38,277.42	630,164.44
LOCAL GRANTS	110,619.00	44,285.36	0.00	66,333.64

**Parkway School District
Consolidated Budget - Programs Recap Report**

Fiscal Year 2022 Through Period 9 Run Date: 04-19-2022 @ 14:13:37

	Budget	Expended	Encumbrances	Unexpended
Grand Total for Funds 10-12	88,368,108.00	56,545,243.95	4,958,920.20	26,863,943.85
Grand Total for Fund 20	162,406,939.00	108,244,403.95	0.00	54,162,535.05
Grand Total for Fund 30	24,362,056.00	24,347,585.16	4,621.08	9,849.76
Grand Total for Funds 40-41	4,692,216.00	2,628,653.44	1,141,436.62	2,761,323.55
 Grand Total All	 314,829,319.00	 202,485,572.77	 28,546,094.02	 83,797,652.21

**Parkway School District
Program Budget - Programs Recap Report**

Fiscal Year 2022 Through Period 9 Run Date: 04-19-2022 @ 14:14:58

	Budget	Expended	Encumbrances	NKNOWN	Unexpended
SPECIAL READING	17,254.00	7,429.61	1,458.10	0.00	8,366.29
COMM ARTS	176,958.00	60,277.02	6,503.79	0.00	110,177.19
MATHEMATICS	66,795.00	41,984.59	3,222.60	0.00	21,587.81
FINE ARTS	120,651.00	70,673.64	11,823.46	0.00	38,153.90
PHYSICAL EDUCATION	56,014.00	30,209.26	2,060.48	0.00	23,744.26
SCIENCE	96,578.00	38,988.28	5,891.03	0.00	51,698.69
SOCIAL STUDIES	78,508.00	36,079.90	367.10	0.00	42,061.00
INSTRUCTIONAL TECHNOLOGY	98,460.00	43,473.86	4,864.15	0.00	50,121.99
GUIDANCE	30,196.00	11,254.19	1,945.00	0.00	16,996.81
ART	130,525.00	87,119.32	9,027.44	0.00	34,378.24
BLDG ADMIN SERVICES	2,475,504.00	997,105.77	339,709.78	0.00	1,138,688.45
AUDIO VISUAL SERVICES	2,175.00	897.96	0.00	0.00	1,277.04
BUSINESS EDUCATION	36,043.00	11,377.64	19.87	0.00	24,645.49
MODERN CLASSICAL LANG	41,287.00	19,121.40	0.00	0.00	22,165.60
FAMILY AND CONSUMER SC	81,846.00	31,343.56	865.03	0.00	49,637.41
INDUSTRIAL ARTS	42,315.00	24,380.14	2,641.20	0.00	15,293.66
STUDENT BODY ACT	244,452.00	118,800.94	34,132.62	0.00	91,518.44
COOP VOC ED	2,469.00	533.03	0.00	0.00	1,935.97
UNIFIED STUDIES	2,322.00	3,365.79	356.30	0.00	-1,400.09
SPEECH	21,995.00	10,984.95	0.00	0.00	11,010.05
LIBRARY SVCS	78,945.00	65,111.68	14,179.68	0.00	-346.36
HEALTH ED	7,690.00	2,033.16	0.00	0.00	5,656.84
EEE CAMP	1,725.00	0.88	0.00	0.00	1,724.12
ESOL	983.00	628.35	0.00	0.00	354.65
GIFTED EDUCATION	12,372.00	5,368.79	49.07	0.00	6,954.14
SPECIAL SERVICES	300.00	0.00	0.00	0.00	300.00
ADC	0.00	387.00	0.00	0.00	-387.00
INSTRUCTIONAL STAFFING	2,400,000.00	2,008,003.98	0.00	0.00	391,996.02
ATHLETICS	1,005,124.00	414,496.42	203,257.38	0.00	387,370.20
ADULT BASIC EDUCATION	176,750.00	109,502.87	4,690.72	0.00	62,556.41
SWIM CLUB	138,200.00	56,812.28	25,513.00	0.00	55,874.72
EARLY CHILDHOOD	96,900.00	34,352.95	2,363.74	0.00	60,183.31
PRESCHOOLS	274,000.00	148,109.72	116.79	0.00	125,773.49
PARK ROCK COMM ED	19,400.00	17,138.98	0.00	0.00	2,261.02
STUDENT SERVICES	1,127,227.00	1,018,841.87	329,761.53	0.00	-221,376.40
PUPIL PERSONNEL	318,770.00	104,444.70	0.00	0.00	214,325.30

**Parkway School District
Program Budget - Programs Recap Report**

Fiscal Year 2022 Through Period 9 Run Date: 04-19-2022 @ 14:14:58

	Budget	Expended	Encumbrances	NKNOWN	Unexpended
HEALTH SERVICES	238,695.00	94,654.94	27,572.91	0.00	116,467.15
GUIDANCE AND COUNSELING	104,628.00	136,450.29	43,500.35	0.00	-75,322.64
SEB SUPPORT	96,236.00	23,088.06	4,876.45	0.00	68,271.49
DATA MGMT/RESEARCH	58,937.00	10,171.33	1,851.89	0.00	46,913.78
STUDENT DISC & ALT STUDIES	8,700.00	6,338.57	77.77	0.00	2,283.66
SPECIAL SERVICES	41,910.00	9,227.08	0.00	-157.50	32,682.92
ASST SUPER OF STUDENT SERV	176,534.00	20,719.23	13,580.32	0.00	142,234.45
TEACH LEARN ACCOUNTABILITY	2,698,377.00	1,094,268.41	241,442.41	0.00	1,362,666.18
PROFESSIONAL LEARNING	408,476.00	76,280.19	17,941.09	0.00	314,254.72
READING DIAGNOSTICS	22,204.00	10,562.55	0.00	0.00	11,641.45
INSTRUC TECH LIBRARY MEDIA	412,050.00	287,397.00	28,346.02	0.00	96,306.98
STUDENT ASSESSMENT	125,323.00	50,136.28	91,745.90	0.00	-16,559.18
ELEM COMM ARTS	5,800.00	9,113.71	0.00	0.00	-3,313.71
ELEM SOC STUDIES	24,750.00	0.00	0.00	0.00	24,750.00
ELEM MATH	2,000.00	1,605.91	0.00	0.00	394.09
ELEM SCIENCE	13,587.00	8,823.76	0.00	0.00	4,763.24
MIDD ELA	4,075.00	652.79	0.00	0.00	3,422.21
MIDD SOC STUDIES	600.00	106.49	0.00	0.00	493.51
MIDD MATH	7,500.00	2,517.06	0.00	0.00	4,982.94
MIDD SCIENCE	13,125.00	962.30	0.00	0.00	12,162.70
HIGH ELA	40,755.00	471.08	0.00	0.00	40,283.92
HIGH SOC STUDIES	2,720.00	344.34	0.00	0.00	2,375.66
HIGH MATH	1,650.00	15.59	0.00	0.00	1,634.41
HIGH SCIENCE	2,380.00	80.00	0.00	0.00	2,300.00
FINE ARTS	195,369.00	86,867.35	36,665.26	0.00	71,836.39
PHYSICAL EDUC	2,000.00	99.00	0.00	0.00	1,901.00
GIFTED	27,700.00	1,469.27	0.00	0.00	26,230.73
ESOL	32,400.00	8,385.32	6,623.88	0.00	17,390.80
WORLD LANGUAGE	12,750.00	12,558.27	0.00	0.00	191.73
CAREER & TECH ED	7,550.00	2,348.89	0.00	0.00	5,201.11
CHOICE	447,750.00	174,476.53	264,116.66	0.00	9,156.81
INSTRUCTIONAL TECHNOLOGY	10,050.00	7,054.22	0.00	0.00	2,995.78
PATH	12,400.00	869.33	220.37	0.00	11,310.30
OUTDOOR SCHOOL	48,150.00	-8,358.95	0.00	0.00	56,508.95
SUMMER SCHOOL	70,000.00	10,119.98	20,000.00	0.00	39,880.02
VIRTUAL CAMPUS	106,538.00	81,352.89	14,089.34	-700.00	11,095.77

**Parkway School District
Program Budget - Programs Recap Report**

Fiscal Year 2022 Through Period 9 Run Date: 04-19-2022 @ 14:14:58

	Budget	Expended	Encumbrances	NKNOWN	Unexpended
ST. LOUIS VIRTUAL ACADEMY	0.00	550.00	0.00	0.00	-550.00
BOARD OF EDUCATION	194,900.00	82,445.59	0.00	0.00	112,454.41
SUPERINTENDENT	452,000.00	22,329.82	0.00	0.00	429,670.18
DISTRICT DUES	157,131.00	156,278.04	0.00	0.00	852.96
LEGAL SERVICES	200,000.00	100,878.86	53,382.50	0.00	45,738.64
DEPUTY SUPERINTENDENT	146,401.00	8,511.14	2,646.00	0.00	135,243.86
CHIEF FINANCIAL OFFICER	10,775.00	2,843.82	1,741.51	0.00	6,189.67
COMMUNICATIONS	169,220.00	113,905.39	32,295.53	0.00	23,019.08
SAFETY SECURITY	823,807.00	469,969.12	235,930.79	0.00	117,907.09
SPECIAL PROJECTS	456,300.00	0.00	0.00	0.00	456,300.00
FINANCE	101,520.00	38,781.22	13,661.53	0.00	49,077.25
INTERNAL EQUIP FIN	483,879.00	329,174.90	174,651.79	0.00	-19,947.69
RISK MGMT	1,844,903.00	1,222,405.30	0.00	0.00	622,497.70
FOOD SERVICES	4,513,531.00	2,702,557.24	103,798.59	0.00	1,707,175.17
PURCHASING	32,760.00	4,852.90	163.11	0.00	27,743.99
PRINT SHOP	-24,425.00	10.21	7,087.63	0.00	-31,522.84
SCHOOL STORES	15,500.00	14,844.90	23,332.86	0.00	-22,677.76
WAREHOUSE	42,340.00	32,340.82	12,241.02	0.00	-2,241.84
MAILROOM	19,500.00	18,518.11	881.05	0.00	100.84
TECHNOLOGY	4,780,566.00	2,201,971.61	1,025,828.67	0.00	1,552,765.72
HUMAN RESOURCES	150,390.00	37,961.43	5,297.73	0.00	107,130.84
TRANSPORTATION	1,665,591.00	1,593,965.12	220,831.53	0.00	-149,205.65
SSD TRANSPORTATION	243,495.00	57,076.18	0.00	0.00	186,418.82
STUDENTS IN TRANSITION	25,000.00	939.84	965.07	0.00	23,095.09
FACILITY OPERATIONS	665,587.00	237,858.37	127,620.25	0.00	300,108.38
FACILITY MAINTENANCE	1,083,260.00	1,167,865.32	385,660.66	0.00	-470,265.98
GROUNDS MAINTENANCE	960,314.00	463,887.72	271,339.19	0.00	225,087.09
PLANNING	1,209,115.00	951,019.90	325,994.20	0.00	-67,899.10
ENVIRONMENTAL SVCS	309,725.00	189,128.21	93,649.46	0.00	26,947.33
FACILITY MANAGEMENT	580,618.00	305,770.26	42,817.34	0.00	232,030.40
REBATE PROJECTS	1,039,221.00	292,319.72	35,638.85	0.00	711,262.43
ENERGY SERVICES	4,066,000.00	2,936,456.64	734,018.02	0.00	395,525.34
SUSTAINABILITY	980,147.00	508,491.51	186,428.29	0.00	285,227.20
2018 BOND	35,000,000.00	10,719,686.27	22,441,116.12	0.00	1,839,197.61
DEBT SERVICE	24,362,056.00	24,347,585.16	4,621.08	0.00	9,849.76
FEDERAL GRANTS	312,335.00	508,484.95	38,277.42	0.00	-234,427.37

Parkway School District Program Budget - Programs Recap Report

Fiscal Year 2022 Through Period 9 Run Date: 04-19-2022 @ 14:14:58

	Budget	Expended	Encumbrances	NKNOWN	Unexpended
LOCAL GRANTS	0.00	13,092.54	0.00	0.00	-13,092.54
STUDENT ACTIVITIES	5,576,880.56	1,064,476.61	429,831.58	0.00	4,082,572.37
 Grand Total for Funds 10-12	40,893,396.56	20,979,051.84	5,155,401.34	-157.50	14,758,943.38
Grand Total for Fund 20	2,667,076.00	2,059,703.93	0.00	-700.00	607,372.07
Grand Total for Fund 30	24,362,056.00	24,347,585.16	4,621.08	0.00	9,849.76
Grand Total for Funds 40-41	4,692,216.00	2,665,071.08	1,248,081.31	0.00	2,618,261.22
 Grand Total All	107,614,744.56	60,771,098.28	28,849,219.85	-857.50	17,994,426.43

- **GLOSSARY**

ACCOUNTS PAYABLE - Unpaid amounts currently owed to vendors for goods and services provided.

ACCOUNTS RECEIVABLE - Revenues earned but not yet received by the District.

AMOUNT PROVIDED FOR BOND PRINCIPAL - Amount available to meet current and future bond payments.

AMOUNT TO BE PROVIDED FOR PRINCIPAL AND INTEREST - The amount of funds needed to repay remaining bonded indebtedness. This is a “memo type” entry and does not represent an actual accumulation of cash.

BONDS AND INTEREST PAYABLE - CURRENT - Amount of bond principal and interest payable in future years.

CONSTRUCTION IN PROGRESS - Amounts expended to date on construction projects not completed. When completed, this account is reduced by the total cost of the completed projects.

ENCUMBRANCES - Obligations in the form of purchase orders, contracts, salary commitments, etc. for which a budgeted appropriation has been made.

EQUITY IN GENERAL FIXED ASSETS - Represents the appropriation of funds over a number of years to acquire land, buildings / improvements, and equipment. It is an offset to the respective asset accounts.

FUND BALANCE - The excess of assets over liabilities, which represent the “net worth” of a fund.

FUNDS - The four basic funds and their purposes are:

Capital Projects (Building) - Only capital equipment and building additions / alterations can be charged to this fund. Primary sources of revenue are property / delinquent taxes, building leases, investment income and sale of bonds.

Debt Service - Bond principal, interest and fees associated with the issue and redemption of bonds are the only expenses chargeable to this fund. Primary sources of revenue are property / delinquent taxes and investment income.

General (Incidental) - Expenses not specifically chargeable to other funds are charged to this fund. Primary sources of revenue are property / delinquent taxes, sales tax, investment income, minimum guarantee, VST, textbook, transportation and food service.

Special Revenue (Teachers) - Only salaries for certificated personnel and the cost medical / dental / vision / life insurance can be charged to this fund. Primary sources of revenue are property / delinquent taxes, investment income, state utility tax, minimum guarantee and VST.

INVENTORIES - Value of consumables purchased for future use.

PREPAID EXPENSES - Services paid for in advance of use (e.g. insurance).

RESERVE - Portion of the fund balance which is segregated for a future use and, therefore, not available for future appropriation.

RESERVE FOR BUDGETED ENCUMBRANCE - Funds budgeted and encumbered but not yet spent.

RESTRICTED RESERVE - Balances in the General Fund or Capital Projects Fund restricted as to the use (e.g. future medical / dental benefits) or unspent bond issue funds.

UNREALIZED REVENUES - Revenues budgeted but not yet realized.

UNSPENT BUDGETED FUNDS - Funds budgeted but not expended or encumbered.



FOR MONTH OF: MARCH – FY22

Attached is a list (alphabetical by vendor) of purchase orders and order for payments \$500 to \$15,000 and \$15,000 + which the administration has approved in accordance with Policy #DJE BP

Reports per DIC.BP

c: Patty Bedborough, Brian Whittle, Erik Lueders

ORDER FOR PAYMENTS

\$500 - \$15,000

MARCH FY22

VENDOR	VENDOR NAME	OBJECT	DOC. #	AMOUNT	WARRANT	CHECK #	INVOICE
700592	AMAZON	6411	473429	\$ 514.07		0	473429
700592	AMAZON	6411	472613	\$ 576.00		0	472613
700592	AMAZON	6411	472677	\$ 584.66		0	472677
700592	AMAZON	6411	472685	\$ 683.80		0	472685
700592	AMAZON	6411	473485	\$ 739.88		0	473485
700592	AMAZON	6411	473377	\$ 768.00		0	473377
700592	AMAZON	6412	472691	\$ 840.00		0	472691
700592	AMAZON	6411	472678	\$ 974.64		0	472678
700592	AMAZON	6411	473450	\$ 1,381.60		0	473450
700592	AMAZON	6371	472037	\$ 3,499.00		0	472037
300092	AT&T MOBILITY	6361	472077	\$ 1,937.16		0	0826811811-012522
300092	AT&T MOBILITY	6361	472076	\$ 2,320.34		0	834829586X01202022
300092	AT&T MOBILITY	6361	472078	\$ 3,563.00		0	4444037603
702584	B & H PHOTO & ELECTR	6412	471999	\$ 8,890.00		0	471999
923351	BSN SPORTS, LLC	6411	469872	\$ 666.19	REG	515764	916002847
923351	BSN SPORTS, LLC	6411	472335	\$ 770.00	REG	516474	915889519
923351	BSN SPORTS, LLC	6411	470546	\$ 935.25	REG	516029	915833679
601820	CEILING CENTER	6411	469978	\$ 654.72	REG	515767	314067
300225	CHARTER COMMUNICATIO	6361	472075	\$ 1,484.33		0	1.15052E+14
300225	CHARTER COMMUNICATIO	6361	472074	\$ 3,200.00		0	1.53689E+11
600355	CITY OF BALLWIN	6319	469863	\$ 900.00	EARLY	515863	21522
626852	CONCOURSE TEAM EXPRE	6411	469927	\$ 630.00	REG	515771	INV473538
999997	DBA BONA FIDE MASKS	6411	471988	\$ 600.00		0	471988
999997	DBA BONA FIDE MASKS	6541	471988	\$ 1,045.00		0	471988
603556	E3 GORDON STOWE	6332	471082	\$ 605.00	REG	516495	1547447
626653	EDUSPIRE SOLUTIONS L	6412	472726	\$ 925.00		0	472726
600150	FORD HOTEL & SUPPLY	6411	470742	\$ 526.35	REG	516053	1369405
600150	FORD HOTEL & SUPPLY	6411	472328	\$ 701.40	REG	516503	1370639
600150	FORD HOTEL & SUPPLY	6411	470744	\$ 868.00	REG	516053	1369417
626858	GAGLIARDO, MICHAEL	6391	472355	\$ 500.00	REG	516507	GAGLIARDO3.17-ADORCH
842406	HAZELWOOD SCHOOL DIS	6311	471797	\$ 867.58	EARLY	516430	2/28/22
831040	HICKMAN HIGH SCHOOL	6391	469888	\$ 650.00	REG	515795	VBGWRESTLING012222
840698	ISTE	6319	472727	\$ 610.00		0	472727
840698	ISTE	6319	472728	\$ 610.00		0	472728
840698	ISTE	6319	472729	\$ 610.00		0	472729
840698	ISTE	6319	473395	\$ 610.00		0	473395
811293	LOGAN UNIV	6339	472740	\$ 850.00		0	9706
301546	METROPOLITAN SEWER D	6335	472066	\$ 507.50		0	472066
301546	METROPOLITAN SEWER D	6335	472067	\$ 554.03		0	472067
301546	METROPOLITAN SEWER D	6335	472068	\$ 703.96		0	472068
301546	METROPOLITAN SEWER D	6335	472069	\$ 719.47		0	472069
301546	METROPOLITAN SEWER D	6335	472070	\$ 807.36		0	472070
301546	METROPOLITAN SEWER D	6335	472071	\$ 967.63		0	472071
301546	METROPOLITAN SEWER D	6335	472040	\$ 1,143.41		0	472040
301546	METROPOLITAN SEWER D	6335	472041	\$ 1,164.09		0	472041
301546	METROPOLITAN SEWER D	6335	472042	\$ 1,184.77		0	472042

VENDOR	VENDOR NAME	OBJECT	DOC. #	AMOUNT	WARRANT	CHECK #	INVOICE
301546	METROPOLITAN SEWER D	6335	472043	\$ 1,613.88		0	472043
301546	METROPOLITAN SEWER D	6335	472045	\$ 1,763.81		0	472045
301546	METROPOLITAN SEWER D	6335	472051	\$ 3,371.68		0	472051
301546	METROPOLITAN SEWER D	6335	472053	\$ 3,431.12		0	472053
302317	MISSOURI AMERICAN WA	6335	472124	\$ 586.60		0	472124
302317	MISSOURI AMERICAN WA	6335	472125	\$ 589.83		0	472125
302317	MISSOURI AMERICAN WA	6335	472130	\$ 618.67		0	472130
302317	MISSOURI AMERICAN WA	6335	472104	\$ 868.58		0	472104
302317	MISSOURI AMERICAN WA	6335	472100	\$ 886.63		0	472100
302317	MISSOURI AMERICAN WA	6335	472133	\$ 897.11		0	472133
302317	MISSOURI AMERICAN WA	6335	472101	\$ 1,000.00		0	472101
302317	MISSOURI AMERICAN WA	6335	472102	\$ 1,000.00		0	472102
302317	MISSOURI AMERICAN WA	6335	472107	\$ 1,000.00		0	472107
302317	MISSOURI AMERICAN WA	6335	472116	\$ 1,000.00		0	472116
302317	MISSOURI AMERICAN WA	6335	472117	\$ 1,000.00		0	472117
302317	MISSOURI AMERICAN WA	6335	472118	\$ 1,000.00		0	472118
302317	MISSOURI AMERICAN WA	6335	472119	\$ 1,000.00		0	472119
302317	MISSOURI AMERICAN WA	6335	472120	\$ 1,000.00		0	472120
812976	MISSOURI ASSOCIATION	6319	473397	\$ 634.00		0	200016122
834915	MSHSAA	6398	470683	\$ 504.00	EARLY	516161	22-W03252
810491	MUSIC FOR ALL	6391	472739	\$ 925.00		0	FALL 2022-SH
812264	NORMAN LUMBER	6411	469749	\$ 958.32	REG	516239	2202-0023
809084	OFFICE ESSENTIALS IN	6411	471826	\$ 502.08	REG	0	WO-100588-1
915628	OVERDRIVE INC.	6412	473393	\$ 587.24		0	08633CO22049385
999997	PAYPAL *STC LLC	6319	472737	\$ 605.00		0	472737
999997	PHONIC BOOKS	6411	473425	\$ 1,058.83		0	473425
920766	PINEAPPLE APPEAL	6411	472234	\$ 777.00	REG	516348	14795
810486	PRIMARY SYSTEMS	6411	470412	\$ 631.70	REG	515997	15826
912341	ROCKWOOD SCHOOL DIST	6341	472381	\$ 720.00	EARLY	516447	12096-095
912341	ROCKWOOD SCHOOL DIST	6341	472380	\$ 884.00	EARLY	516447	11096-095
913364	RUSH TRUCK CENTERS	6411	469990	\$ 830.00	REG	515827	3025841675
622897	SCHOOL DISTRICT OF C	6391	469890	\$ 503.40	REG	515829	VGBASKETBALL012422
835444	SCHOOL DISTRICT OF T	6342	471083	\$ 700.00	EARLY	516287	PKWY WEST DECA 2022
913367	SIMPSON MATERIAL CO.	6411	471824	\$ 619.91	REG	516358	4366861
915579	SMORE	6412	471899	\$ 999.00	REG	516359	20505
999997	SQ *BEBE'S BAKE SHOP	6411	472008	\$ 620.00		0	472008
901567	ST. LOUIS CNTY CAB C	6342	470415	\$ 598.00	031722	7788	5287-012
300263	T-MOBILE	6361	472140	\$ 4,822.08		0	472140
300263	T-MOBILE	6361	472140	\$ 4,822.08		0	472140
300263	T-MOBILE	6361	472140	\$ 4,823.52		0	472140
913414	TRINITY CHRISTIAN RE	6391	471415	\$ 892.50	REG	516364	160
912224	TRINITY MT. CARMEL	6391	471460	\$ 550.00	REG	516365	1175-10
300044	VERIZON WIRELESS	6361	472137	\$ 3,095.55		0	9898537959
999997	VSI*MO PARK AND REC	6319	472157	\$ 600.00		0	472157
906503	WAGNER PORTRAIT GROU	6411	469869	\$ 647.48	REG	515844	192344
912084	WENGER CORP	6411	472170	\$ 3,230.87		0	1818861
907117	WEST ALLEN GRILL	6411	472343	\$ 899.40	REG	516598	15023
912380	WURTH BAER SUPPLY CO	6411	470419	\$ 800.96	032422	7808	9022043734
TOTAL:				\$ 116,313.02			

PURCHASE ORDERS

\$500 - \$15,000

MARCH FY22

PO#	Vendor Name	PO Date	Order Amount	Balance	Status	1st GL Account
81220018	AGILIX HOLDINGS, LLC	03/14/2022	\$ 1,850.55	\$ -	0 - Closed	10.2561.504.0085.633
58220114	AGON SPORT LLC	03/14/2022	\$ 1,000.00	\$ 1,000.00	8 - Printed	11.1421.900.1090.641
50220084	ALZHEIMER'S ASSOCIATION	03/14/2022	\$ 1,160.63	\$ -	0 - Closed	11.1411.900.1050.641
85220297	BAALMANN, RICHARD JR	03/14/2022	\$ 6,000.00	\$ 6,000.00	8 - Printed	10.2543.553.0085.641
54220144	BARNES & NOBLE BOOKSELLERS	03/23/2022	\$ 1,000.00	\$ 1,000.00	8 - Printed	10.2222.122.1080.644
85220303	BCI ACRYLIC BATH SYSTEMS INC	03/17/2022	\$ 6,103.78	\$ 6,103.78	8 - Printed	10.2542.552.0085.641
63220229	BEST BUY BUSINESS ADVANTAGE ACCOUNT	03/23/2022	\$ 3,712.35	\$ 3,712.35	8 - Printed	10.1211.351.3080.641
73220041	BETZ GOLF CENTER LLC	03/17/2022	\$ 5,000.00	\$ 5,000.00	8 - Printed	10.1421.204.1050.631
64220005	BLOODSAW, MARTHA	03/04/2022	\$ 3,000.00	\$ -	0 - Closed	10.2643.511.0070.631
45220017	BOB ROGERS TRAVEL	03/28/2022	\$ 10,367.00	\$ -	0 - Closed	11.1411.900.3040.639
14220028	BRAINPOP	03/28/2022	\$ 1,995.00	\$ 1,995.00	8 - Printed	10.1111.108.4210.641
62220254	CAPS NETWORK, INC.	03/03/2022	\$ 1,500.00	\$ -	0 - Closed	10.1321.386.0075.637
56220165	CAROLINA BIOLOGICAL SUPPLY	03/01/2022	\$ 626.57	\$ 626.57	8 - Printed	10.1151.106.1075.641
58220112	CAROLINA BIOLOGICAL SUPPLY	03/07/2022	\$ 2,727.79	\$ -	0 - Closed	10.1151.106.1090.641
58220111	CASUAL TEES	03/07/2022	\$ 550.00	\$ -	0 - Closed	11.1411.900.1090.641
63220222	CDW LLC	03/15/2022	\$ 10,699.50	\$ -	0 - Closed	10.2561.504.0085.641
39220034	CENPRO SERVICES, INC	03/17/2022	\$ 5,200.00	\$ 5,200.00	8 - Printed	10.2542.555.0085.633
85220300	CENTAR INDUSTRIES, INC	03/15/2022	\$ 1,214.65	\$ -	0 - Closed	10.2542.552.0085.641
50220089	CIRCUS TRIX MISSOURI, LLC	03/17/2022	\$ 2,400.00	\$ 2,400.00	8 - Printed	11.1411.900.1050.641
36220007	COMMITTEE FOR CHILDREN	03/04/2022	\$ 5,938.92	\$ -	0 - Closed	10.1251.305.0075.631
85220312	COMPI DISTRIBUTORS, INC	03/30/2022	\$ 2,816.12	\$ 2,816.12	8 - Printed	10.2222.122.1080.641
50220079	CONCOURSE TEAM EXPRESS	03/02/2022	\$ 1,625.00	\$ 1,625.00	8 - Printed	11.1421.900.1050.641
50220085	CONCOURSE TEAM EXPRESS	03/14/2022	\$ 1,147.50	\$ -	0 - Closed	11.1421.900.1050.641
54220133	CONCOURSE TEAM EXPRESS	03/01/2022	\$ 3,000.00	\$ 3,000.00	8 - Printed	11.1421.900.1080.641
54220134	CONCOURSE TEAM EXPRESS	03/01/2022	\$ 1,040.00	\$ 1,040.00	8 - Printed	11.1421.900.1080.641
54220139	CONCOURSE TEAM EXPRESS	03/09/2022	\$ 650.00	\$ 650.00	8 - Printed	11.1421.900.1080.641
54220141	CONCOURSE TEAM EXPRESS	03/17/2022	\$ 1,782.00	\$ 1,782.00	8 - Printed	11.1421.900.1080.641
54220142	CONCOURSE TEAM EXPRESS	03/23/2022	\$ 1,200.00	\$ 1,200.00	8 - Printed	11.1411.900.1080.641
54220147	CONCOURSE TEAM EXPRESS	03/30/2022	\$ 880.00	\$ 880.00	8 - Printed	11.1421.900.1080.641
58220117	CONCOURSE TEAM EXPRESS	03/14/2022	\$ 1,272.00	\$ 1,272.00	8 - Printed	11.1421.900.1090.641
58220118	CONCOURSE TEAM EXPRESS	03/14/2022	\$ 867.00	\$ 867.00	8 - Printed	10.1421.117.1090.641
58220124	CONCOURSE TEAM EXPRESS	03/28/2022	\$ 700.00	\$ 700.00	8 - Printed	11.1421.900.1090.641
62220257	COOPERATIVE EDUCATIONAL SERVICE AGENCY #1	03/10/2022	\$ 2,340.00	\$ 2,340.00	8 - Printed	10.2213.351.0075.631
62220262	COOPERATIVE EDUCATIONAL SERVICE AGENCY #1	03/10/2022	\$ 1,820.00	\$ -	0 - Closed	10.2213.351.0075.631
58220113	CORPORATE INTERIORS INC	03/14/2022	\$ 1,276.20	\$ 1,276.20	8 - Printed	10.1151.102.1090.641
63220214	CRW CONSULTING, LLC	03/10/2022	\$ 3,500.00	\$ -	0 - Closed	10.2331.510.0070.631
63220223	DATA2 CORPORATION	03/15/2022	\$ 759.00	\$ -	0 - Closed	10.2331.510.0070.641
54220136	DAVE & BUSTER'S ENTERTAINMENT, INC.	03/02/2022	\$ 8,162.13	\$ 8,162.13	8 - Printed	11.1411.900.1080.639
63220208	DELL MARKETING EDUCATIONAL SALES	03/03/2022	\$ 3,867.00	\$ 3,867.00	8 - Printed	40.2521.501.0070.654
63220210	DELL MARKETING EDUCATIONAL SALES	03/08/2022	\$ 10,218.00	\$ -	0 - Closed	40.2411.111.1075.654
63220211	DELL MARKETING EDUCATIONAL SALES	03/09/2022	\$ 1,352.50	\$ -	0 - Closed	10.1111.108.4100.641
63220215	DELL MARKETING EDUCATIONAL SALES	03/10/2022	\$ 1,289.00	\$ 1,289.00	8 - Printed	40.2321.408.0070.654

PO#	Vendor Name	PO Date	Order Amount	Balance	Status	1st GL Account
63220216	DELL MARKETING EDUCATIONAL SALES	03/10/2022	\$ 1,289.00	\$ 1,289.00	8 - Printed	40.2322.409.0070.654
63220225	DELL MARKETING EDUCATIONAL SALES	03/17/2022	\$ 1,703.00	\$ -	0 - Closed	40.2411.111.4120.654
63220226	DELL MARKETING EDUCATIONAL SALES	03/17/2022	\$ 538.75	\$ 538.75	8 - Printed	10.1111.108.4120.641
63220232	DELL MARKETING EDUCATIONAL SALES	03/23/2022	\$ 1,340.00	\$ 1,340.00	8 - Printed	40.2331.510.0070.654
50220095	DEMCO INC	03/28/2022	\$ 2,192.66	\$ 2,192.66	8 - Printed	10.2222.122.1050.641
10220032	DRAPERIES BY MORTON MOEL	03/14/2022	\$ 1,902.70	\$ 1,902.70	8 - Printed	10.2411.111.4200.641
11220012	DRAPERIES BY MORTON MOEL	03/28/2022	\$ 8,568.00	\$ 8,568.00	8 - Printed	40.2411.111.4010.654
50220080	DRAPERIES BY MORTON MOEL	03/02/2022	\$ 5,600.00	\$ 5,600.00	8 - Printed	11.1411.900.1050.641
58220122	EXP TRIPS, INC.	03/28/2022	\$ 2,317.50	\$ 2,317.50	8 - Printed	11.1411.900.1090.634
85220313	FAIRWAY CAPITAL, LLC	03/30/2022	\$ 1,235.36	\$ 1,235.36	8 - Printed	10.2543.553.0085.641
62220253	FANNIN, JOHN E JR.	03/02/2022	\$ 1,000.00	\$ -	0 - Closed	10.1151.380.1080.643
85220291	FASTENAL COMPANY	03/08/2022	\$ 12,000.00	\$ 11,485.32	8 - Printed	10.2542.552.0085.641
85220292	FASTENAL COMPANY	03/09/2022	\$ 5,000.00	\$ 4,765.61	8 - Printed	10.2542.552.0085.641
58220115	FLINN SCIENTIFIC INC	03/14/2022	\$ 835.14	\$ -	0 - Closed	10.1151.106.1090.641
20220029	FOLLETT SCHOOL SOLUTIONS	03/02/2022	\$ 1,191.10	\$ 1,191.10	8 - Printed	11.1411.900.4245.641
23220032	FOLLETT SCHOOL SOLUTIONS	03/14/2022	\$ 610.58	\$ 610.58	8 - Printed	10.1111.102.4190.641
62220263	FOLLETT SCHOOL SOLUTIONS	03/23/2022	\$ 1,023.00	\$ -	0 - Closed	10.3911.805.0075.641
83220096	FOLLETT SCHOOL SOLUTIONS	03/03/2022	\$ 1,441.82	\$ 1,441.82	8 - Printed	10.2222.355.4060.644
83220097	FOLLETT SCHOOL SOLUTIONS	03/10/2022	\$ 2,900.94	\$ 2,900.94	8 - Printed	10.2222.355.4120.644
83220098	FOLLETT SCHOOL SOLUTIONS	03/10/2022	\$ 1,767.50	\$ 1,767.50	8 - Printed	10.2222.355.4110.644
83220099	FOLLETT SCHOOL SOLUTIONS	03/23/2022	\$ 3,160.94	\$ 3,160.94	8 - Printed	10.2222.355.4260.644
56220171	GOPHER SPORT	03/07/2022	\$ 1,560.74	\$ 1,031.61	8 - Printed	10.1151.105.1075.641
41220022	GUIAR CENTER STORES INC	03/23/2022	\$ 2,200.00	\$ 2,200.00	8 - Printed	10.1131.104.3060.633
85220290	HILLYARD, INC	03/07/2022	\$ 2,645.96	\$ -	0 - Closed	10.2542.551.0085.641
58220123	HOGAN, PETER	03/28/2022	\$ 2,000.00	\$ -	0 - Closed	11.3911.900.1090.639
85220305	HOLT ELECTRICAL SUPPLIES	03/28/2022	\$ 2,996.80	\$ 2,996.80	8 - Printed	40.2542.552.0085.654
85220293	INTERSTATE RESTORATION, LLC	03/09/2022	\$ 3,847.34	\$ -	0 - Closed	10.2542.552.0085.633
23220029	INTER-STATE STUDIO & PUBLISHING CO	03/03/2022	\$ 1,500.00	\$ 1,500.00	8 - Printed	11.1411.900.4190.641
1220033	J COLE INC.	03/14/2022	\$ 1,026.00	\$ -	0 - Closed	11.1111.900.4020.633
41220021	J COLE INC.	03/23/2022	\$ 3,285.00	\$ 3,285.00	8 - Printed	11.1131.900.3060.639
56220184	JAEGER SPORTS INC	03/17/2022	\$ 727.86	\$ 727.86	8 - Printed	11.1421.900.1075.641
54220145	JEFFCO TRAVEL SERVICE	03/30/2022	\$ 7,147.00	\$ -	0 - Closed	11.1411.900.1080.634
50220094	JOSTENS INC	03/23/2022	\$ 781.06	\$ -	0 - Closed	11.1411.900.1050.641
56220187	JOSTENS INC	03/30/2022	\$ 803.00	\$ 803.00	8 - Printed	11.1411.900.1075.641
63220231	JOURNEYED.COM, INC	03/23/2022	\$ 4,359.59	\$ 4,359.59	8 - Printed	40.2331.510.0070.654
54220138	KAP7 INTERNATIONAL, INC.	03/03/2022	\$ 1,520.00	\$ 1,520.00	8 - Printed	11.1421.900.1080.641
65220027	KIRKSVILLE R-III SCHOOL DISTRICT	03/22/2022	\$ 1,796.08	\$ -	0 - Closed	10.2112.302.0070.631
65220028	KIRKSVILLE R-III SCHOOL DISTRICT	03/22/2022	\$ 2,857.40	\$ -	0 - Closed	10.2112.302.0070.631
56220179	KRUEGER POTTERY	03/14/2022	\$ 711.97	\$ 711.97	8 - Printed	10.1151.110.1075.641
62220264	LOGAN UNIVERSITY COLLEGE OF CHIROPRACTIC	03/23/2022	\$ 1,300.00	\$ -	0 - Closed	10.1151.380.1075.633
43220028	MEGAN MEIER FOUNDATION	03/30/2022	\$ 1,000.00	\$ -	0 - Closed	10.2411.111.3080.631
58220110	MISSOURI DECA	03/02/2022	\$ 945.00	\$ -	0 - Closed	11.1411.900.1090.639
96220001	MPGTANDEM	03/28/2022	\$ 2,646.00	\$ 2,646.00	8 - Printed	10.2321.404.0070.641
45220016	MUSIC IN THE PARKS	03/14/2022	\$ 6,644.00	\$ -	0 - Closed	11.1131.900.3040.639
71220012	MYBRANDPROMO INC	03/14/2022	\$ 1,023.95	\$ -	0 - Closed	10.2322.409.0070.641
50220081	NAMI ST. LOUIS	03/07/2022	\$ 2,512.96	\$ -	0 - Closed	11.1411.900.1050.641
54220143	NASSP	03/23/2022	\$ 1,175.00	\$ 1,175.00	8 - Printed	11.1411.900.1080.641
85220298	NELSON LAND SERVICE LLC	03/15/2022	\$ 15,000.00	\$ 15,000.00	8 - Printed	10.2543.553.0085.639
85220310	NORMAN LUMBER	03/28/2022	\$ 1,242.10	\$ -	0 - Closed	10.2542.552.0085.641
63220233	NORTHSTAR AV	03/23/2022	\$ 3,060.00	\$ 3,060.00	8 - Printed	10.2331.510.0070.641

PO#	Vendor Name	PO Date	Order Amount	Balance	Status	1st GL Account
85220307	NORTHWEST AUTOMOTIVE & TRAILER	03/28/2022	\$ 1,265.57	\$ -	0 - Closed	10.2543.553.0085.633
62220255	NOTTELMANN MUSIC CO	03/09/2022	\$ 7,525.80	\$ 7,525.80	8 - Printed	40.1131.351.3040.654
36220008	OFFICE ESSENTIALS INC.	03/09/2022	\$ 3,587.45	\$ 3,587.45	8 - Printed	10.1251.305.0075.641
40220020	OFFICE ESSENTIALS INC.	03/17/2022	\$ 592.49	\$ 592.49	8 - Printed	10.2411.111.3020.641
48220244	OFFICE ESSENTIALS INC.	03/14/2022	\$ 1,512.02	\$ 1,512.02	8 - Printed	48.4051.618.1090.652
50220078	OFFICE ESSENTIALS INC.	03/02/2022	\$ 3,470.06	\$ 3,470.06	8 - Printed	10.2411.106.1050.641
5220010	OFFICE ESSENTIALS INC.	03/01/2022	\$ 2,000.00	\$ 1,656.86	8 - Printed	10.1111.111.4160.641
58220121	OFFICE ESSENTIALS INC.	03/17/2022	\$ 12,480.00	\$ 12,480.00	8 - Printed	10.1151.111.1090.641
73220043	OFFICE ESSENTIALS INC.	03/28/2022	\$ 1,061.90	\$ 1,061.90	8 - Printed	10.1421.204.0075.641
8220036	OFFICE ESSENTIALS INC.	03/07/2022	\$ 708.10	\$ -	0 - Closed	10.2411.111.4100.641
73220040	ONE PUTT GOLF GROUP, LLC	03/17/2022	\$ 3,000.00	\$ 3,000.00	8 - Printed	10.1421.204.1050.631
43220027	PINEAPPLE APPEAL	03/30/2022	\$ 800.00	\$ 379.24	8 - Printed	10.1331.115.3080.641
75220043	PRESTIGE BUSINESS EQUIPMENT LLC	03/17/2022	\$ 8,181.00	\$ -	0 - Closed	40.2521.501.0070.654
50220088	PRINTER'S INK, LLC	03/17/2022	\$ 1,904.15	\$ -	0 - Closed	11.1411.900.1050.641
58220119	PRINTER'S INK, LLC	03/14/2022	\$ 820.00	\$ -	0 - Closed	11.1411.900.1090.641
58220120	PRINTER'S INK, LLC	03/17/2022	\$ 3,516.21	\$ -	0 - Closed	11.1411.900.1090.641
39220033	PROFESSIONAL SERVICE INDUSTRIES	03/14/2022	\$ 3,840.00	\$ 3,840.00	8 - Printed	10.2542.555.0085.639
39220035	PROFESSIONAL SERVICE INDUSTRIES	03/17/2022	\$ 3,078.00	\$ 3,078.00	8 - Printed	10.2542.555.0085.633
48220245	PROFESSIONAL SERVICE INDUSTRIES	03/22/2022	\$ 13,857.00	\$ 13,857.00	8 - Printed	48.4031.618.7500.652
10220031	PROJECT LEAD THE WAY INC	03/02/2022	\$ 8,754.75	\$ 8,754.75	8 - Printed	10.1111.351.4200.641
11220011	PROJECT LEAD THE WAY INC	03/02/2022	\$ 9,299.00	\$ 9,299.00	8 - Printed	10.1111.351.4180.641
1220032	PROJECT LEAD THE WAY INC	03/03/2022	\$ 3,101.75	\$ 3,101.75	8 - Printed	10.1111.351.4020.641
12220011	PROJECT LEAD THE WAY INC	03/02/2022	\$ 10,199.25	\$ 4,101.00	8 - Printed	10.1111.351.4120.641
13220011	PROJECT LEAD THE WAY INC	03/03/2022	\$ 3,685.50	\$ 3,685.50	8 - Printed	10.1111.351.4010.641
14220027	PROJECT LEAD THE WAY INC	03/02/2022	\$ 8,274.25	\$ 8,274.25	8 - Printed	10.1111.351.4210.641
15220006	PROJECT LEAD THE WAY INC	03/03/2022	\$ 5,335.00	\$ 5,335.00	8 - Printed	10.1111.351.4030.641
17220020	PROJECT LEAD THE WAY INC	03/02/2022	\$ 7,672.00	\$ 7,672.00	8 - Printed	10.1111.351.4110.641
18220006	PROJECT LEAD THE WAY INC	03/03/2022	\$ 5,662.00	\$ 2,030.25	8 - Printed	10.1111.351.4235.641
19220015	PROJECT LEAD THE WAY INC	03/02/2022	\$ 8,630.75	\$ 8,630.75	8 - Printed	10.1111.351.4260.641
20220030	PROJECT LEAD THE WAY INC	03/02/2022	\$ 8,982.50	\$ 1,084.50	8 - Printed	10.1111.351.4245.641
21220015	PROJECT LEAD THE WAY INC	03/03/2022	\$ 6,755.00	\$ 6,755.00	8 - Printed	10.1111.351.4035.641
2220029	PROJECT LEAD THE WAY INC	03/02/2022	\$ 10,106.25	\$ 10,106.25	8 - Printed	10.1111.351.4040.641
22220005	PROJECT LEAD THE WAY INC	03/03/2022	\$ 7,456.00	\$ 7,456.00	8 - Printed	10.1111.351.4130.641
23220030	PROJECT LEAD THE WAY INC	03/03/2022	\$ 7,404.75	\$ 1,142.25	8 - Printed	10.1111.351.4190.641
5220011	PROJECT LEAD THE WAY INC	03/02/2022	\$ 8,849.00	\$ 8,849.00	8 - Printed	10.1111.351.4160.641
6220018	PROJECT LEAD THE WAY INC	03/02/2022	\$ 8,101.25	\$ 8,101.25	8 - Printed	10.1111.351.4220.641
8220033	PROJECT LEAD THE WAY INC	03/03/2022	\$ 7,188.75	\$ 7,188.75	8 - Printed	10.1111.351.4100.641
9220010	PROJECT LEAD THE WAY INC	03/02/2022	\$ 7,791.00	\$ 7,791.00	8 - Printed	10.1111.351.4060.641
40220021	QDOBA MEXICAN EATS	03/30/2022	\$ 1,471.50	\$ 1,471.50	8 - Printed	11.2411.900.3020.641
50220087	QUALITY INN & SUITES CHESTERFIELD VILLAGE	03/17/2022	\$ 1,958.00	\$ 1,958.00	8 - Printed	11.1411.900.1080.639
63220230	RCC, INC.	03/23/2022	\$ 2,490.00	\$ 2,490.00	8 - Printed	10.2411.111.1050.641
48220249	SANSONE, TIM	03/30/2022	\$ 4,059.00	\$ -	0 - Closed	48.4051.618.1080.652
56220183	SCHOOL SAVERS	03/17/2022	\$ 1,473.27	\$ 1,473.27	8 - Printed	10.1151.103.1075.641
10220030	SCHOOL SPECIALTY, LLC	03/02/2022	\$ 531.85	\$ 531.85	8 - Printed	10.1111.110.4200.641
23220033	SCHOOL SPECIALTY, LLC	03/17/2022	\$ 931.30	\$ 931.30	8 - Printed	11.1411.900.4190.641
5220018	SCHOOL SPECIALTY, LLC	03/03/2022	\$ 582.97	\$ -	0 - Closed	10.1111.102.4160.641
5220019	SCHOOL SPECIALTY, LLC	03/03/2022	\$ 1,020.66	\$ -	0 - Closed	10.1111.110.4160.641
5220021	SCHOOL SPECIALTY, LLC	03/09/2022	\$ 1,138.80	\$ 1,138.80	8 - Printed	10.1111.111.4160.641
9220011	SCHOOL SPECIALTY, LLC	03/17/2022	\$ 1,070.84	\$ -	0 - Closed	10.1111.110.4060.641
43220026	SCHUMERT, STEPHEN	03/09/2022	\$ 2,723.50	\$ -	0 - Closed	11.1411.900.3080.641
85220296	SIEVEKING, INCORPORATED	03/14/2022	\$ 6,613.23	\$ -	0 - Closed	10.2541.556.0085.648
85220311	SIEVEKING, INCORPORATED	03/28/2022	\$ 11,181.71	\$ -	0 - Closed	10.2541.556.0085.648

PO#	Vendor Name	PO Date	Order Amount	Balance	Status	1st GL Account
85220314	SITEONE LANDSCAPE SUPPLY HOLDING, LLC	03/30/2022	\$ 5,000.00	\$ 5,000.00	8 - Printed	10.2543.553.0085.641
85220302	SOLAR CONTROL FILM	03/17/2022	\$ 5,152.00	\$ -	0 - Closed	10.2542.552.0085.641
66220004	SPECIAL SCHOOL DIST. OF ST. LOUIS COUNTY	03/10/2022	\$ 3,933.74	\$ -	0 - Closed	10.1221.395.0075.631
84220003	SPECIAL SCHOOL DIST. OF ST. LOUIS COUNTY	03/10/2022	\$ 586.37	\$ -	0 - Closed	10.1221.308.0070.631
62220260	SPHERO INC.	03/10/2022	\$ 3,072.30	\$ -	0 - Closed	40.2211.387.0075.654
50220091	ST. LOUIS CARDINALS -GROUP SALES	03/18/2022	\$ 9,120.00	\$ -	0 - Closed	11.1421.900.1050.641
85220309	ST. LOUIS CNTY HEALTH DEPT	03/28/2022	\$ 1,416.00	\$ -	0 - Closed	10.2542.552.0085.639
61220029	STARBEAM LIGHTING LLC	03/15/2022	\$ 2,656.25	\$ -	0 - Closed	10.2542.561.0085.641
39220037	SUPERIOR ACQUISTION LLC	03/30/2022	\$ 974.37	\$ -	0 - Closed	10.2542.555.0085.639
85220289	SUPERIOR ACQUISTION LLC	03/03/2022	\$ 1,670.72	\$ -	0 - Closed	10.2542.552.0085.633
61220028	THE SHRED TRUCK LLC	03/03/2022	\$ 1,200.00	\$ -	0 - Closed	10.2542.561.0085.633
54220135	TKO DJ'S	03/01/2022	\$ 1,299.00	\$ -	0 - Closed	11.1411.900.1080.639
39220031	TRADEBE ENVIRONMENTAL SERVICES, LLC	03/03/2022	\$ 2,169.66	\$ 2,169.66	8 - Printed	10.2542.555.0085.631
39220032	TRADEBE ENVIRONMENTAL SERVICES, LLC	03/14/2022	\$ 1,999.03	\$ 1,999.03	8 - Printed	10.2542.555.0085.631
64220006	TRANSACT COMMUNICATIONS, LLC	03/16/2022	\$ 5,925.00	\$ -	0 - Closed	10.2643.511.0070.641
97220056	TRUCK CENTERS INC	03/10/2022	\$ 3,412.45	\$ -	0 - Closed	10.2552.512.0080.633
76220009	TUETH, KEENEY, COOPER, MOHAN & JACKSTADT, P.C	03/10/2022	\$ 1,995.00	\$ -	0 - Closed	10.2311.396.0070.631
41220020	USA TOURS, INC.	03/01/2022	\$ 2,255.00	\$ 2,255.00	8 - Printed	11.2551.900.3060.634
50220093	VARSITY BRANDS HOLDINGS CO., INC	03/23/2022	\$ 1,800.00	\$ -	0 - Closed	11.1421.900.1050.641
56220172	VARSITY BRANDS HOLDINGS CO., INC	03/09/2022	\$ 1,332.00	\$ 1,332.00	8 - Printed	11.1421.900.1075.641
8220035	VIRCO MFG CORP	03/07/2022	\$ 4,046.24	\$ 4,046.24	8 - Printed	10.1111.111.4100.641
63220236	W. SCHILLER & CO., INC.	03/28/2022	\$ 6,245.00	\$ 6,245.00	8 - Printed	10.2225.510.0070.641
56220186	WAGNER PORTRAIT GROUP	03/28/2022	\$ 2,400.00	\$ 2,400.00	8 - Printed	11.1411.900.1075.639
81220017	WANCEL, ALFREDO	03/04/2022	\$ 1,114.50	\$ -	0 - Closed	10.0000.000.0000.515
62220261	WASHINGTON MUSIC SALES CENTER INC.	03/10/2022	\$ 1,864.60	\$ 1,864.60	8 - Printed	10.1131.351.3040.641
50220082	WEINHARDT PARTY RENTAL, INC.	03/07/2022	\$ 1,400.00	\$ 1,400.00	8 - Printed	11.1411.900.1050.633
62220252	WINGS OF HOPE INC.	03/02/2022	\$ 2,500.00	\$ -	0 - Closed	10.1321.386.0075.639
50220090	WINNING, CHARLES	03/17/2022	\$ 1,048.56	\$ -	0 - Closed	11.1411.900.1050.641
TOTAL:			\$ 590,825.91			

\$15,000+
MARCH FY 22

PO#	Vendor Name	PO Date	Order Amount	Balance	Status	1st GL Account
63220228	ACER SERVICE CORPORATION	03/18/2022	\$ 20,000.00	\$ 19,234.40	8 - Printed	10.0000.000.0000.161
63220204	APPLE INC.	03/02/2022	\$ 327,200.00	\$ 327,200.00	8 - Printed	40.2225.510.0070.654
48220247	BROCK GROUP, INC	03/30/2022	\$ 338,500.00	\$ 338,500.00	8 - Printed	48.4051.618.1080.652
63220212	DELL MARKETING EDUCATIONAL SALES	03/10/2022	\$ 17,675.00	\$ -	0 - Closed	10.2225.510.0070.641
63220213	GRANITE TELECOMMUNICATIONS	03/10/2022	\$ 48,000.00	\$ 37,843.91	8 - Printed	10.2331.510.0070.636
85220308	JAMES G STAAT TUCKPOINTING, INC	03/28/2022	\$ 16,680.00	\$ 16,680.00	8 - Printed	10.2542.552.0085.633
63220205	JOURNEYED.COM, INC	03/02/2022	\$ 149,689.84	\$ 149,689.84	8 - Printed	10.2331.510.0070.641
63220227	JOURNEYED.COM, INC	03/17/2022	\$ 640,915.39	\$ 640,915.39	8 - Printed	10.2331.510.0070.641
75220042	LIVONGO HEALTH INC	03/15/2022	\$ 160,000.00	\$ 106,878.00	8 - Printed	12.0000.000.0000.317
85220295	MCCARTHY HOLDINGS INC	03/09/2022	\$ 50,000.00	\$ 28,985.82	8 - Printed	40.2542.554.1090.652
48220243	MCCARTHY HOLDINGS INC	03/09/2022	\$ 249,093.50	\$ 249,093.50	8 - Printed	48.4051.618.1050.652
48220242	MCCARTHY HOLDINGS INC	03/09/2022	\$ 2,000,000.00	\$ 2,000,000.00	8 - Printed	48.4051.618.1080.652
73220042	MSHSAA	03/28/2022	\$ 25,000.00	\$ 25,000.00	8 - Printed	10.1421.204.0075.637
85220299	MUNIE OUTDOOR SERVICES, INC.	03/15/2022	\$ 68,000.00	\$ 68,000.00	8 - Printed	10.2543.553.0085.639
50220083	SHERATON WEST PORT INN	03/08/2022	\$ 17,840.00	\$ -	0 - Closed	11.1411.900.1050.639
97220055	SIEVEKING, INCORPORATED	03/10/2022	\$ 22,622.55	\$ -	0 - Closed	10.2552.512.0080.648
65220026	SISTAKEEPER EMPOWERMENT CENTER	03/14/2022	\$ 25,422.00	\$ -	0 - Closed	10.2122.304.0075.631
48220246	SPRAY SERVICES, INC.	03/30/2022	\$ 21,929.00	\$ 21,929.00	8 - Printed	48.4051.618.4120.652
76220008	ST. LOUIS COUNTY ELECTION BOARD	03/01/2022	\$ 69,188.48	\$ -	0 - Closed	10.2311.400.0070.631
63220235	STAPLES	03/28/2022	\$ 1,024,540.00	\$ 1,024,540.00	8 - Printed	10.0000.000.0000.161
48220241	STRAIGHTUP SOLAR, LLC	03/09/2022	\$ 29,739.00	\$ 29,739.00	8 - Printed	48.4051.618.4100.652
85220306	UNIPAK CORP.	03/28/2022	\$ 20,456.00	\$ 20,456.00	8 - Printed	10.2542.551.0085.641
63220209	W. SCHILLER & CO., INC.	03/03/2022	\$ 28,503.50	\$ 28,503.50	8 - Printed	40.2331.510.0070.654
48220248	WELLINGTON ENVIRONMENTAL CONSULTING AND	03/30/2022	\$ 90,472.00	\$ 90,472.00	8 - Printed	48.4051.618.7500.652
TOTAL:			\$ 5,461,466.26			

SPOT MARKET REPORT - FEBRUARY FY22

PO #	Create Date	Vendor Name	Comm. Code	Qty.	UOM	Unit Price	Description	Object	Account Amt
61220016	08/19/21	809084 OFFICE ESSENTIALS INC.	202	840	EACH	\$ 28.90	8.5 x 11 WHITE COPY PAPER - 30% RECYCLED PAPER - BOISE ASPEN 30	1615	\$ 24,276.00
61220017	08/19/21	809084 OFFICE ESSENTIALS INCORPORATED	202	80	EACH	\$ 28.90	8.5 x 11 WHITE COPY PAPER - 30% RECYCLED PAPER - BOISE ASPEN 30	1615	\$ 2,312.00
61220017	08/19/21	809084 OFFICE ESSENTIALS INCORPORATED	202	80	EACH	\$ 28.90	8.5 x 11 WHITE COPY PAPER - 30% RECYCLED PAPER - BOISE ASPEN 30	1615	\$ 2,312.00
61220021	10/14/21	809084 OFFICE ESSENTIALS INCORPORATED	202	840	EACH	\$ 30.90	8.5 x 11 WHITE COPY PAPER - 30% RECYCLED PAPER - BOISE ASPEN 30	1615	\$ 25,956.00
61220022	10/28/21	809084 OFFICE ESSENTIALS INCORPORATED	202	200	EACH	\$ 30.90	8.5 x 11 WHITE COPY PAPER - 30% RECYCLED PAPER - BOISE ASPEN 30	1615	\$ 6,180.00
61220024	12/07/2021	809084 OFFICE ESSENTIALS INCORPORATED	202	840	EACH	\$ 32.15	8.5 x 11 WHITE COPY PAPER - 30% RECYCLED PAPER - BOISE ASPEN 30	1615	\$ 27,006.00
61220025	01/05/2022	809084 OFFICE ESSENTIALS INCORPORATED	202	120	EACH	\$ 33.15	8.5 x 11 WHITE COPY PAPER - 30% RECYCLED PAPER - BOISE ASPEN 30	1615	\$ 3,978.00
61220027	01/21/2022	626843 DOCUMENT IMAGING DIMENSIONS, INC	202	840	EACH	\$ 32.87	8.5 x 11 WHITE COPY PAPER - 30% RECYCLED PAPER - BOISE ASPEN 30	1615	\$ 27,610.80
85220047	07/07/21	910351 SIEVEKING, INCORPORATED	400	1469.4	EACH	\$ 2.27	NO LEAD 87 OCT RFG	6486	\$ 3,342.00
85220047				1	EACH	\$ 260.77	FEDERAL AND STATE TAXES AND FEES	6486	\$ 260.77
85220047				431	EACH	\$ 2.27	NO LEAD 87 OCT RFG	6486	\$ 980.27
85220047				1	EACH	\$ 79.88	FEDERAL AND STATE TAXES AND FEES	6486	\$ 79.88
85220094	07/16/21	910351 SIEVEKING, INCORPORATED	400	250.1	EACH	\$ 2.33	NO LEAD 87 OCT RFG	6486	\$ 582.91
85220094				1	EACH	\$ 45.97	FEDERAL AND STATE TAXES AND FEES	6486	\$ 45.97
85220094				358.8	EACH	\$ 2.28	UL SULFUR HI-WAY DIESEL	6486	\$ 816.27
85220094				1	EACH	\$ 64.90	FEDERAL AND STATE TAXES AND FEES	6486	\$ 64.90
85220094				1580	EACH	\$ 2.33	NO LEAD 87 OCT RFG	6486	\$ 3,682.51
85220094				1	EACH	\$ 280.04	FEDERAL AND STATE TAXES AND FEES	6486	\$ 280.04
85220128	08/04/21	910351 SIEVEKING, INCORPORATED	400	429.2	EACH	\$ 2.37	NO LEAD 87 OCT RFG	6486	\$ 1,017.20
85220128				1	EACH	\$ 77.17	FEDERAL AND STATE TAXES AND FEES	6486	\$ 77.17
85220128				331.2	EACH	\$ 2.31	UL SULFUR HI-WAY DIESEL	6486	\$ 765.07
85220128				1	EACH	\$ 60.10	FEDERAL AND STATE TAXES AND DUES	6486	\$ 60.10
85220140	08/18/21	910351 SIEVEKING, INCORPORATED	400	3000	EACH	\$ 2.38	NO LEAD 87 OCT RFG	6486	\$ 7,140.90
85220140				1	EACH	\$ 527.40	FEDERAL AND STATE TAXES AND FEES	6486	\$ 527.40
85220140				432.2	EACH	\$ 2.38	NO LEAD 87 OCT RFG	6486	\$ 1,028.77
85220140				1	EACH	\$ 77.69	FEDERAL AND STATE TAXES AND FEES	6486	\$ 77.69
85220140				319.5	EACH	\$ 2.36	UL SULFUR HI WAY DIESEL	6486	\$ 753.00
85220140				1	EACH	\$ 58.06	FEDERAL AND STATE TAXES AND FEES	6486	\$ 58.06
85220148	08/27/21	910351 SIEVEKING, INCORPORATED	400	395.9	EACH	\$ 2.37	NO LEAD 87 OCT RFG	6486	\$ 936.62
85220148				1	EACH	\$ 71.37	FEDERAL AND STATE TAXES AND FEES	6486	\$ 71.37
85220148				300.3	EACH	\$ 2.28	UL SULFUR HI-WAY DIESEL	6486	\$ 684.68

PO #	Create Date	Vendor Name	Comm. Code	Qty.	UOM	Unit Price	Description	Object	Account Amt
85220148				1	EACH	\$ 54.71	FEDERAL AND STATE TAXES AND FEES	6486	\$ 54.71
85220148				2140	EACH	\$ 2.37	NO LEAD 87 OCT RFG	6486	\$ 5,062.81
85220148				1	EACH	\$ 377.59	FEDERAL AND STATE TAXES AND FEES	6486	\$ 377.59
85220162	09/15/21	910351 SIEVEKING, INCORPORATED	400	419.3	EACH	\$ 2.37	NO LEAD 87 OCT RFG	6486	\$ 993.03
85220162				1	EACH	\$ 75.44	FEDERAL AND STATE TAXES AND FEES	6486	\$ 75.44
85220162				273.7	EACH	\$ 2.35	UL SULFUR HI-WAY DIESEL	6486	\$ 642.65
85220162				1	EACH	\$ 50.08	FEDERAL AND STATE TAXES AND FEES	6486	\$ 50.08
85220162				2210	EACH	\$ 2.37	NO LEAD 87 OCT RFG	6486	\$ 5,233.94
85220162				1	EACH	\$ 389.78	FEDERAL AND STATE TAXES AND FEES	6486	\$ 389.78
85220201	10/11/21	910351 SIEVEKING, INCORPORATED	400	405.9	EACH	\$ 2.32	NO LEAD 87 OCT RFG	6486	\$ 940.51
85220201				1	EACH	\$ 73.11	FEDERAL AND STATE TAXES AND FEES	6486	\$ 73.11
85220201				406.7	EACH	\$ 2.43	UL SULFUR HI-WAY DIESEL	6486	\$ 989.75
85220201				1	EACH	\$ 73.25	FEDERAL AND STATE TAXES AND FEES	6486	\$ 73.25
85220201				3100.2	EACH	\$ 2.32	NO LEAD 87 OCT RFG	6486	\$ 7,183.47
85220201				1	EACH	\$ 544.85	FEDERAL AND STATE TAXES AND FEES	6486	\$ 544.85
85220204	10/22/21	642477 ENERGY PETROLEUM COMPANY	400	444.2	EACH	\$ 2.50	NO LEAD 87 OCT RFG	6486	\$ 1,110.50
85220204				1	EACH	\$ 89.78	FEDERAL AND STATE TAXES AND FEES	6486	\$ 89.78
85220204				300.1	EACH	\$ 2.65	PREMIUM LOW SULFUR CLEAR DIESEL	6486	\$ 795.27
85220204				1	EACH	\$ 60.72	FEDERAL AND STATE TAXES AND FEES	6486	\$ 60.72
85220204				3961.7	EACH	\$ 2.50	NO LEAD 87 OCT RFG	6486	\$ 9,904.25
85220204				1	EACH	\$ 800.77	FEDERAL AND STATE TAXES AND FEES	6486	\$ 800.77
85220227	11/16/21	910351 SIEVEKING, INCORPORATED	400	4559	EACH	\$ 2.48	NO LEAD 87 OCT RFG	6486	\$ 11,304.50
85220227				1	EACH	\$ 912.95	FEDERAL AND STATE TAXES AND FEES	6486	\$ 912.95
85220227				412.5	EACH	\$ 2.48	NO LEAD 87 OCT RFG	6486	\$ 1,022.84
85220227				1	EACH	\$ 84.57	FEDERAL AND STATE TAXES AND FEES	6486	\$ 84.57
85220227				300	EACH	\$ 2.57	UL SULFUR HI-WAY DIESEL	6486	\$ 770.82
85220227				1	EACH	\$ 62.16	FEDERAL AND STATE TAXES AND FEES	6486	\$ 62.16
85220243	12/07/2021	800559 KIESEL COMPANY	400	5082	EACH	\$ 2.42	NO LEAD 87 OCT RFG	6486	\$ 12,298.44
85220243				1	EACH	\$ 1,029.48	FEDERAL AND STATE TAXES AND FEES	6486	\$ 1,029.48
85220243				425.2	EACH	\$ 2.42	NO LEAD 87 OCT RFG	6486	\$ 1,028.98
85220243				1	EACH	\$ 166.01	FEDERAL AND STATE TAXES AND FEES	6486	\$ 166.01
85220243				400	EACH	\$ 2.53	ULS #2 CLEAR DIESEL	6486	\$ 1,012.00
85220243				1	EACH	\$ 83.19	FEDERAL AND STATE TAXES AND FEES	6486	\$ 83.19
85220249	12/09/2021	910351 SIEVEKING, INCORPORATED	400	279.1	EACH	\$ 2.20	NO LEAD 87 OCT RFG	6486	\$ 614.24
85220249				1	EACH	\$ 58.00	FEDERAL AND STATE TAXES AND FEES	6486	\$ 58.00
85220249				150.1	EACH	\$ 2.17	ULS HI-WAY DIESEL	6486	\$ 326.42
85220249				2421	EACH	\$ 2.20	NO LEAD 87 OCT RFG	6486	\$ 5,328.14
85220249				1	EACH	\$ 487.06	FEDERAL AND STATE TAXES AND FEES	6486	\$ 487.06
85220249				1	EACH	\$ 32.30	FEDERAL AND STATE TAXES AND FEES	6486	\$ 32.30
85220261	01/11/2022	910351 SIEVEKING, INCORPORATED	400	430.8	EACH	\$ 2.40	NO LEAD 87 OCT RFG	6486	\$ 1,033.92
85220261				1	EACH	\$ 88.22	FEDERAL AND STATE TAXES AND FEES	6486	\$ 88.22

PO #	Create Date	Vendor Name	Comm. Code	Qty.	UOM	Unit Price	Description	Object	Account Amt
85220261				361.6	EACH	\$ 2.33	ULS HI-WAY DIESEL	6486	\$ 842.53
85220261				1	EACH	\$ 74.43	FEDERAL AND STATE TAXES AND FEESQ	6486	\$ 74.43
85220267	01/21/2022	642477 ENERGY PETROLEUM COMPANY	400	3910.7	EACH	\$ 2.38	NO LEAD 87 OCT RFG	6486	\$ 9,307.47
85220267				1	EACH	\$ 790.47	FEDERAL AND STATE TAXES AND FEES	6486	\$ 790.47
85220267				375	EACH	\$ 2.38	NO LEAD 87 OCT RFG	6486	\$ 892.50
85220267				1	EACH	\$ 75.80	FEDERAL AND STATE TAXES AND FEES	6486	\$ 75.80
85220267				232.9	EACH	\$ 2.57	PREMIUM LOW SULFUR CLEAR DIESEL	6486	\$ 598.55
85220267				1	EACH	\$ 47.13	FEDERAL AND STATE TAXES AND FEES	6486	\$ 47.13
85220275	02/01/2022	910351 SIEVEKING, INCORPORATED	400	3742	EACH	\$ 2.49	NO LEAD 87 OCT RFG	6486	\$ 9,314.21
85220275				1	EACH	\$ 750.21	FEDERAL AND STATE TAXES AND FEES	6486	\$ 750.21
85220275				429.1	EACH	\$ 2.49	NO LEAD 87 OCT RFG	6486	\$ 1,068.07
85220275				1	EACH	\$ 87.88	FEDERAL AND STATE TAXES AND FEES	6486	\$ 87.88
85220275				250.1	EACH	\$ 2.47	ULS HI-WAY DIESEL	6486	\$ 618.32
85220275				1	EACH	\$ 52.22	FEDERAL AND STATE TAXES AND FEES	6486	\$ 52.22
85220280	02/17/2022	910351 SIEVEKING, INCORPORATED	400	2509	EACH	\$ 2.55	NO LEAD 87 OCT RFG	6486	\$ 6,403.97
85220280				1	EACH	\$ 504.59	FEDERAL AND STATE TAXES AND FEES	6486	\$ 504.59
85220280				391	EACH	\$ 2.55	NO LEAD 87 OCT RFG	6486	\$ 998.03
85220280				1	EACH	\$ 80.29	FEDERAL AND STATE TAXES AND FEES	6486	\$ 80.29
85220280				237	EACH	\$ 2.68	ULS HI-WAY DIESEL	6486	\$ 635.73
85220280				1	EACH	\$ 49.61	FEDERAL AND STATE TAXES AND FEES	6486	\$ 49.61
85220282	02/17/2022	910351 SIEVEKING, INCORPORATED	400	431.6	EACH	\$ 2.75	NO LEAD 87 OCT RFG	6486	\$ 1,186.51
85220282				1	EACH	\$ 88.37	FEDERAL AND STATE TAXES AND FEES	6486	\$ 88.37
85220282				200.1	EACH	\$ 2.85	ULS HI-WAY DIESEL	6486	\$ 570.29
85220282				1	EACH	\$ 42.25	FEDERAL AND STATE TAXES AND FEES	6486	\$ 42.25
85220282				1268.8	EACH	\$ 2.75	NO LEAD 87 OCT RFG	6486	\$ 3,488.06
85220282				1	EACH	\$ 257.54	FEDERAL AND STATE TAXES AND FEES	6486	\$ 257.54
85220288	02/28/2022	642477 ENERGY PETROLEUM COMPANY	400	3075.1	EACH	\$ 2.72	NO LEAD 87 OCT RFG	6486	\$ 8,364.27
85220288				1	EACH	\$ 621.56	FEDERAL AND STATE TAXES AND FEES	6486	\$ 621.56
85220288				387.9	EACH	\$ 2.72	NO LEAD 87 OCT RFG	6486	\$ 1,055.09
85220288				1	EACH	\$ 78.41	FEDERAL AND STATE TAXES AND FEES	6486	\$ 78.41
85220288				250.4	EACH	\$ 2.85	ULS DIESEL WINTER	6486	\$ 713.64
85220288				1	EACH	\$ 50.68	FEDERAL AND STATE TAXES AND FEES	6486	\$ 50.68
85220296	03/14/2022	910351 SIEVEKING, INCORPORATED	400	1600	EACH	\$ 2.84	NO LEAD 87 OCT RFG	6486	\$ 4,538.56
85220296				1	EACH	\$ 323.52	FEDERAL AND STATE TAXES AND FEES	6486	\$ 323.52
85220296				399.3	EACH	\$ 2.84	NO LEAD 87 OCT RFG	6486	\$ 1,132.65
85220296				1	EACH	\$ 81.94	FEDERAL AND STATE TAXES AND FEES	6486	\$ 81.94
85220296				162.2	EACH	\$ 3.09	UL SULFUR HI-WAY DIESEL	6486	\$ 501.85

PO #	Create Date	Vendor Name	Comm. Code	Qty.	UOM	Unit Price	Description	Object	Account Amt
85220296				1	EACH	\$ 34.71	FEDERAL AND STATE TAXES AND FEES	6486	\$ 34.71
85220311	03/28/2022	910351 SIEVEKING, INCORPORATED	400	2646.3	EACH	\$ 3.16	NO LEAD 87 OCT RFG	6486	\$ 8,349.61
85220311				1	EACH	\$ 531.94	FEDERAL AND STATE TAXES AND FEES	6486	\$ 531.94
85220311				430.1	EACH	\$ 3.16	NO LEAD 87 OCT RFG	6486	\$ 1,357.05
85220311				1	EACH	\$ 88.08	FEDERAL AND STATE TAXES AND FEES	6486	\$ 88.08
85220311				236.1	EACH	\$ 3.41	UL SULFUR HI-WAY DIESEL	6486	\$ 805.60
85220311				1	EACH	\$ 49.43	FEDERAL AND STATE TAXES AND FEES	6486	\$ 49.43
97220039	11/04/21	910351 SIEVEKING, INCORPORATED	500	7500	EACH	\$ 2.53	PREMIUM ULTRA LOW SULFUR #2 DIESEL	6486	\$ 19,008.00
97220039				1	EACH	\$ 16.05	FEDERAL OIL SPILL FEE	6486	\$ 16.05
97220039				1	EACH	\$ 7.50	MO AGI TAX PER GAL EXTRA	6486	\$ 7.50
97220039				1	EACH	\$ 1,275.00	MO STATE TAX PER GALLON	6486	\$ 1,275.00
97220039				1	EACH	\$ 5.25	MO ADG INSP FEE TAX PER GAL	6486	\$ 5.25
97220039				1	EACH	\$ 18.75	MO USTD TRANSP LOAD FEE TAX PER GAL	6486	\$ 18.75
97220041	11/08/21	910351 SIEVEKING, INCORPORATED	500	7500	EACH	\$ 2.38	PREMIUM ULTRA LOW SULFUR #2 DIESEL FUEL	6486	\$ 17,883.75
97220041				1	EACH	\$ 16.05	FED OIL SPILL FEE	6486	\$ 16.05
97220041				1	EACH	\$ 7.50	MO AGI TAX PER GAL EXTRA	6486	\$ 7.50
97220041				7500	EACH	\$ 0.17	MO STATE TAX PER GAL	6486	\$ 1,275.00
97220041				1	EACH	\$ 5.25	MO ADG INSP FEE TAX PER GAL	6486	\$ 5.25
97220041				1	EACH	\$ 18.75	MO USTD TRANSP LOAD FEE TAX PER GAL	6486	\$ 18.75
97220046	12/22/2021	910351 SIEVEKING, INCORPORATED	500	7500	EACH	\$ 2.23	PREMIUM ULTRA LOW SULFUR #2 DIESEL FUEL	6486	\$ 16,732.50
97220046				1	EACH	\$ 16.05	FED OIL SPILL FEE	6486	\$ 16.05
97220046				1	EACH	\$ 7.50	MO AGI TAX PER GALLON EXTRA	6486	\$ 7.50
97220046				1	EACH	\$ 1,275.00	MO STATE TAX PER GALLON	6486	\$ 1,275.00
97220046				1	EACH	\$ 5.25	MO ADG INSP FEE TAX PER GALLON	6486	\$ 5.25
97220046				1	EACH	\$ 18.75	MO USTD TRANSP LOAD FEE TAX PER GALLON	6486	\$ 18.75
97220053	02/24/2022	626035 HOME SERVICE OIL CO INC	500	7500	EACH	\$ 2.70	PREMIUM ULTRA LOW SULFUR #2 DIESEL	6486	\$ 20,222.25
97220053				7500	EACH	\$ 0.00	FED OIL SPILL FEE	6486	\$ 16.05
97220053				7500	EACH	\$ 0.00	MO AGI TAX PER GAL	6486	\$ 7.50
97220053				7500	EACH	\$ 0.17	MO STATE TAX PER GAL	6486	\$ 1,275.00
97220053				7500	EACH	\$ 0.00	MO ADG INSP. FEE TAX PER GAL	6486	\$ 5.25
97220053				7500	EACH	\$ 0.00	MO. USTD TRANSP. LOAD FEE TAX PER GA	6486	\$ 18.75
97220055	03/10/2022	910351 SIEVEKING, INCORPORATED	500	7500	EACH	\$ 2.84	PREMIUM ULTRA LOW SULFUR, #2 DIESEL	6486	\$ 21,300.00
97220055				7500	EACH	\$ 0.00	FED. OIL SPILL FEE	6486	\$ 16.05
97220055				7500	EACH	\$ 0.00	MO. AGI TAX PER GAL.	6486	\$ 7.50
97220055				7500	EACH	\$ 0.17	MO. STATE TAX PER GAL.	6486	\$ 1,275.00

PO #	Create Date	Vendor Name	Comm. Code	Qty.	UOM	Unit Price	Description	Object	Account	Amt
97220055				7500	EACH	\$ 0.00	MO. ADG INSP. FEE TAX PER GAL.	6486	\$	5.25
97220055				7500	EACH	\$ 0.00	MO. USTD TRANSP. LOAD FEE	6486	\$	18.75
85220151	09/01/21	625546 CENTRAL POLY-BAG CORP	401	200	EACH	\$ 17.00	TRASH CAN LINER 24" X 23" X 0.4 MIL LINEAR LOW DENSITY ONLY CLEAR - STAR SELAED (1000/CASE)	6411	\$	3,400.00
85220152	09/01/21	914674 UNIPAK CORP.	401	400	EACH	\$ 22.45	TRASH CAN LINERS 40" X 48"-16 MICRON HIGH DENSITY ONLY - CLEAR - STAR SEALED - (250/CASE)	6411	\$	8,980.00
85220152				800	EACH	\$ 12.95	TRASH CAN LINER - 33" X 39" - 1.3 MIL LINEAR LOW DENSITY ONLY - CLEA - STAR SEALED (100/CASE)	6411	\$	10,360.00
85220246	12/08/2021	914674 UNIPAK CORP.	401	400	EACH	\$ 23.10	UPC #404816N 40" X 48" - 16 MICRON HIGH ENSITY ONLY - CLEAR STAR-SEALED (250/CASE) 500 CASES	6411	\$	9,240.00
85220151	09/01/2021	625546 CENTRAL POLY-BAG CORP	401	200	EACH	\$ 17.00	TRASH CAN LINER 24" X 23" X 0.4 MIL LI	6411	\$	3,400.00
85220152	09/01/2021	914674 UNIPAK CORP.	401	400	EACH	\$ 22.45	TRASH CAN LINERS 40" X 48"-16 MICRONI	6411	\$	8,980.00
85220152				800	EACH	\$ 12.95	TRASH CAN LINER - 33" X 39" - 1.3 MILLIN	6411	\$	10,360.00
85220246	12/08/2021	914674 UNIPAK CORP.	401	400	EACH	\$ 23.10	UPC #404816N 40" X 48" - 16 MICRONHIK	6411	\$	9,240.00
85220287	02/28/2022	914674 UNIPAK CORP.	401	400	EACH	\$ 23.50	40" X 48" X 16 MICRON LARGE TRASH CAN	6411	\$	9,400.00
85220306	03/28/2022	914674 UNIPAK CORP.	401	400	EACH	\$ 23.50	UPS #404816N TRASH CAN LINERS 40" X 4	6411	\$	9,400.00
85220306				800	EACH	\$ 13.82	UPC #4013 TRASH CAN LINERS 33" X 39" -	6411	\$	11,056.00
Total Commodity 202 (Paper)									\$	119,630.80
Total Commodity 400 (Fuel - Facilities)									\$	164,027.67
Total Commodity 500 (Fuel - Transportation)									\$	101,759.25
Total Commodity 401 (Trash Liners)									\$	93,816.00
Total Commodity 700 (Produce)									\$	-
Grand Total All Commodity									\$	479,233.72